

Enrichment Options Booklet KS4 2024 – 2025 Term 3



Contents page

My Body

Multi sports and Dodgeball	Page 4
Fitness suite	Page 5
Exploring Dance Choreography	Page 6

My Creativity

DJ	Page 7
Creativity through Drama	Page 8
Grand Designs	Page 9
Music	Page 10
Textiles	Page 11
Graphics Sculpture workshop	Page 12

My Community

Enterprise	Page 13
Language Immersion Challenge	Page 14
British Sign Language Club	Page 15

My Future

Can cook will cook!	Page 16
Debate club	Page 17
Geo insights	Page 18

My Mind

STEM	Page 19
Book Club	Page 20
Chess Club	Page 21
Games club	Page 22
Conspiracy Club	Page 23
Flight Club (Darts)	Page 24



Enrichment

Our curriculum places great value on extra-curricular activities as a mechanism of enriching the taught curriculum, allowing students to deepen their understanding, see the applications of their studies, promote enjoyment and foster relationships, health, skills and broader interests. The purpose therefore of these enrichment activities is to provide our students opportunities to engage with life in modern Britain and make better informed decisions in adult life.

Temple Moor prides itself on offering a wide and varied suite of extra-curricular activities through the extensive number of clubs, sports teams and performances that our staff run after school, throughout the year, during the new period 6 which is 14:35 – 15:05 Monday to Thursday only (for two of these nights students will take part in their chosen enrichment activity and on the other nights students in year 9 will take part in Read to Succeed and students in Year 10 will continue to study the RE qualification).

Students will opt for either two extra-curricular clubs per term. The activities that students will choose to take part in on a Monday and a Wednesday each fall under one of the following categories:

- **My Body** – activities across a range of sports, including teams which participate in local and regional competitions.
- **My Creativity** – clubs and activities that provide opportunities for students to develop their imagination and inventiveness
- **My Community** – activities linked to supporting and developing student’s understanding of their role within the local community
- **My Future** – projects and challenges which broaden students’ perspectives beyond Temple Moor.
- **My Mind** – clubs and activities linked to academic subjects.

Enrichment forms an important part of students’ daily experience at Temple Moor and provides opportunities for students to develop their initiative, ambition by seeking challenges as well as reflection and collaboration with their peers. This will support students whilst at school as well as preparing them for life once they leave Temple Moor.

Students will have a week to decide which enrichment activities they would like to take part in on a Monday and a Wednesday for Term Two and speak to any members of staff if they have any questions regarding an activity.

Students will then make their options the week beginning 4/12/23 choosing a first and second choice as well as a reserve for both Monday and Wednesday. If a student is unfortunate enough not to receive their first and second choice they will still have the option of choosing that enrichment activity the following term and will be spoken to directly by a member of staff to select an alternative activity.

Multi sports and Dodgeball
Subject: Physical Education
Enrichment activity: My Body

What is this enrichment about?

These two enrichment clubs allow you to train as part of a team in a variety of sports.

How will this enrich my learning?

This will give you additional time outside of your Core PE lessons to develop your skills as a team. The session will not just be games based but will be designed to improve your overall performance individually and collectively. This will hopefully then make your team more competitive in both external league and cup fixtures.

What will I develop as a result of this enrichment?

- Physical attributes
- Technical skills
- Tactics
- Teamwork
- Leadership



Who is the enrichment suitable for?

Students who enjoy participating in a variety of sports alongside developing their communication and teamwork skills.

What is the time commitment?

You can study this in one of your enrichments per week. The session will last for 30 minutes (2:35-3:05).

Further information:

For further information, please speak to Mr Taberner



What is this enrichment about?

This enrichment club allows you to develop your physical, social and emotional wellbeing each week.

How will this enrich my learning?

This will give you additional time outside of your Core PE lessons to develop your skills as an individual or partner. The session will be designed to improve your overall performance individually and collectively.

What will I develop as a result of this enrichment?

- Physical attributes
- Technical skills
- Tactics
- Teamwork
- Leadership



Who is the enrichment suitable for?

Those who are interested in developing their sports skills, or their health and wellbeing.

What is the time commitment?

You can study this in one of your enrichments per week. The session will last for 30 mins. You will need your PE kit for each lesson.

Further information:

For further information, please speak to Mr Taberner





What is this enrichment about?

Dance enrichment is an opportunity for you to learn teacher led choreography in a variety of dance styles. You will develop your creativity through choreographic group tasks including, developing your own warm ups to lead to the class, creating your own choreography and expanding on pre-existing dance routines. Dance styles include contemporary, hip hop, jazz and musical theatre. Throughout this enrichment, you will also develop your technique through various technical exercises that will allow you to progress further as a dancer.

How will this enrich my learning?

You will develop a variety of transferable skills that will not only support your progress in dance but also across the whole curriculum. For example, your confidence will improve through group work and performances to support you with the ability to share creative work with peers. You will have the opportunity to explore creatively and develop different ways to express yourself, which will allow you to deal with challenging situations.

What will I develop as a result of this enrichment?

- Improve dance technique
- General physical fitness
- Performance skills
- Creativity
- Self evaluation
- Co-operative
- Good communicator

Who is the enrichment suitable for?

All KS4 students

What is the time commitment?

You can study this in one of your enrichments per week, with the ability to opt for it one term at a time.

Further information:

For further information, please speak to Miss Riley.



DJ

Subject: Music

Enrichment category: My Creativity



mixing music through IT and the school's mixers. The school learning attributes you will develop through this enrichment activity include being reflective as well as inquisitive.

Who is the enrichment suitable for?

KS4 students who love music and are creative.

What is the time commitment?

You can study this in one of your enrichments per week, with the ability to opt for it one term at a time.

What is this enrichment about?

This enrichment activity will give you the opportunity to develop the skills needed to become a DJ! Over the course of a term you will:

- Decide what genre (s) of music you'll play
- Listen/watch your favourite DJs in action
- Understand how to use the mixing software *Serato*
- Train and practice using the school's mixing desks and music from *Serato*.

How will this enrich my learning?

You will develop initiative in trying and mixing new sounds, from different genres of music, to hear what mixes well together.

What will I develop as a result of this enrichment?

You will develop a love for music from different years, as well the technique of successfully

Further information:

For further information, please speak to Miss Homer.





What is this enrichment about?

Drama enrichment gives you the opportunity to explore your creativity using a stimulus as the basis for devising performances. You will also develop basic drama skills such as vocal and physical skill which will allow you to create higher quality performances. Alongside this we will explore techniques such as mime and physical theatre to add extra elements to your performances, which will further support your curriculum experience.

How will this enrich my learning?

You will develop a variety of transferable skills that will not only support your progress in drama but also across the whole curriculum. For example, your confidence will improve through group work and performances to support you with the ability to share creative work with peers. You will have the opportunity to explore creatively and develop different ways to express yourself, which will allow you to deal with challenging situations.

What will I develop as a result of this enrichment?

- Improve drama technique
- Performance skills
- Creativity
- Confidence
- Good communicator
- Reflective
- Motivated

Who is the enrichment suitable for?

All KS4 students.

What is the time commitment?

You can study this in one of your enrichments per week, with the ability to opt for it one term at a time.

Further information:

For further information, please speak to Miss Hewson.





What is this enrichment about?

This enrichment activity will involve you developing your architectural skills as you design a home for the future. You will need to consider the materials you would use to build your home, as well as how to ensure it is energy efficient and environmentally friendly. Once you have designed your home you will then have the opportunity to make a scale model of it.

How will this enrich my learning?

This will enable you to apply the school's qualities in demonstrating initiative when designing your building but fulfilling the brief at the same time. You will then develop teamwork when it is time to turn your design into a real-life model.

What will I develop as a result of this enrichment?

You will develop IT skills in drawing your design, as well as working to scale. You will develop your knowledge on materials used in the building trade as well as how to make homes damp proof and energy efficient. Alongside this, you will develop skills in cutting, sanding and painting wood as you make the model of your design.

Through this activity you will develop the school attributes including thoughtfulness and self evaluative.

Who is the enrichment suitable for?

KS4 students.

What is the time commitment?

You can study this in one of your enrichments per week, with the ability to opt for it one term at a time.

Further information:

For further information, please speak to Mr Longfellow.



What is this enrichment about?

Music enrichment will give you the opportunity to explore a variety of instruments and music genres. You will learn basic skills on different instruments such as keyboard, ukulele, and drums, as well as developing ensemble skills when playing music with your peers. You will explore, through listening to and playing, a variety of genres of music to broaden your musical understanding. You will also take a part in different activities that will improve your performance and composition skills.

How will this enrich my learning?

You will develop a variety of transferable skills, that will not only support your progress in music, but also across the whole curriculum. For example, your confidence will improve, through group work and performances, to support you with the ability to share creative work with peers. You will have the opportunity to explore creatively and develop different ways to express yourself, which will allow you to deal with challenging situations.

What will I develop as a result of this enrichment?

- Improve instrumental technique
- Performance skills
- Creativity
- Ensemble skills
- Broader understanding of different genres of music.
- Good communicator
- Co-operative

Who is the enrichment suitable for?

KS4 students

What is the time commitment?

You can study this in one of your enrichments per week, with the ability to opt for it one term at a time.

Further information:

For further information, please speak to Mrs Johnson.



What is this enrichment about?

This enrichment activity is about you researching designers and new artists who make links to cultures through pattern and colour to inspire you personally and your learning.

You will develop new skills such as photoshop and intertwine this with embroidery skills, to create your own patterns using needlework, incorporating clash colours to make your work unique!

How will this enrich my learning?

You will seek challenge in researching a designer/new artist and adapt their style to influence your designs. You will also develop your critical thinking when it is time for you to create your final design in embroidery, as well as problem solving in overcoming any issues you have in trying to make your design a reality.

What will I develop as a result of this enrichment?

You will learn how to use programmes such as photoshop in designing your project. You will need to

work to strict deadlines, from the initial design stage through to the final product, ensuring you fulfil the brief you were given.

The learning attributes you would develop through this club include Thoughtful and Self evaluative.

Who is the enrichment suitable for?

All KS4 students.

What is the time commitment?

You can study this in one of your enrichments per week, with the ability to opt for it one term at a time.

Further information:

For further information, please speak to Mrs Harris or Miss Carter.



What is this enrichment about?

Initially you will produce a design before creating a 3D model using card, wire and wood.

How will this enrich my learning?

You will be able to develop skills in 3D design, selecting appropriate materials and using cutting tools.

Once your 3D piece is complete, you can decorate your final artwork with paint or collage.

What will I develop as a result of this enrichment?

- 3D design skills.

- The ability to select appropriate materials for your design.
- Using cutting and making tools safely and purposefully.

Who is the enrichment suitable for?

This course is suited to students who are creative, experimental and like solving creative problems.

What is the time commitment?

You will study this course for the duration of one term across Period 6 enrichment slots.

Further information:

For further information, please speak to Mr Cashion.



What is this enrichment about?

This enrichment activity is about you creating and developing an idea for a new product/service, with the aim of convincing the TMHS Dragons to invest in your business idea rather than your peer's idea. You will work in a group to come up with initial product ideas, develop these ideas to meet customer needs based on research, work out the cost of making your product, create a brand image for your product, calculate the price and work out if it will be profitable. You will then need to pitch your idea to potential investors.

How will this enrich my learning?

This will support your learning through communication and group work. For your business idea to be a success, you need to learn how to work well in a team, reflect on what is working and what needs adapting, or you run the risk of being fired!

What will I develop because of this enrichment?

You will learn how to work to deadlines as you go from forming an initial idea, implementing a plan for

your product , previous examples have included running a Christmas movie night and selling tickets to a VIP area as well as planning which food and drinks to sell and what to charge in order to cover your costs as well as making profit for your selected charity.

The school learning attributes you would develop through this club include Thoughtfulness and Resilience.

Who is the enrichment suitable for?

All KS4 students.

What is the time commitment?

You can study this in one of your enrichments per week, with the ability to opt for it one term at a time.

Further information:

For further information, please speak to Mrs Barker



What is this enrichment about?

The Language Immersion Challenge is designed to help you keep practising your target language outside of lessons. You will receive a booklet containing 14 activities for you to complete, ranging from sending an email, watching a film or reading a teenager's blog in the target language to name just a few. If you choose this activity, you will be awarded Gold, Silver, or Bronze certificates depending on how many of the challenges you have completed. There are also an optional 5 advanced challenges, and if you complete all of these as well as the first 14 challenges, you will be awarded a Platinum certificate.

Your work will enable you to achieve a recognised certificate by the initiative "Routes Into Languages", recognised by universities and schools across Yorkshire and the UK.

How will this enrich my learning?

This will enable you to really immerse yourself in the language you are learning and be exposed to real-life use of the language. You will come across resources online and offline used by teenagers from the language-speaking country you are studying, and therefore discover a completely new aspect of learning a language and its culture! By doing so, you will demonstrate resilience when completing challenges in a foreign language.

What will I develop as a result of this enrichment?

- Reading and listening skills
- Cultural awareness
- Communication skills
- Increased curiosity about the world around you

Who is the enrichment suitable for?

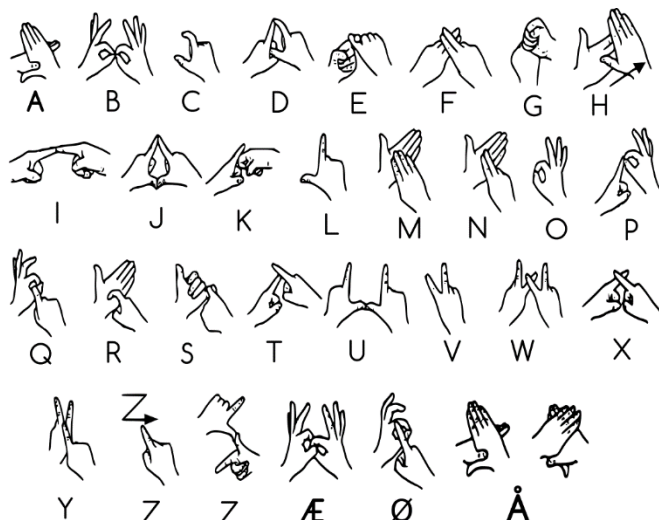
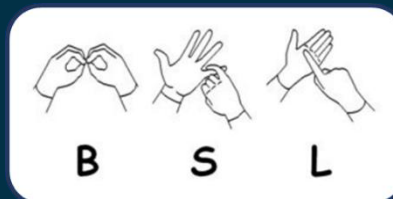
KS4 students.

What is the time commitment?

You can study this as one of your enrichments per week, and depending on the challenges, an additional extra 5 mins per day, or the time of watching a film. You will have the ability to opt for it one term at a time.

Further information:

For further information, please speak to Mrs Greenfield or Miss Garnier.



What is this enrichment about?

Ever wanted to learn another language?

What about a silent language?

Did you know that 1 in 6 of the UK adult population is affected by hearing loss?

900,000 people in the UK are profoundly deaf.

Perhaps you know someone who suffers from hearing loss, perhaps a family member? Wouldn't it be brilliant if you could communicate with them?

Come and join us and learn how to sign!

We will be starting with the basics and go from there. You never know, you may be a natural and this may well become your second language!

How will this enrich my learning?

Learning any new language supports your knowledge growth and ultimately makes you more employable in the future. You will be able to communicate with loved ones who have lost

their hearing or people you work with in the future.

Communication is how we all get along and would it not be a better world if everyone has the ability to be *heard*.

What will I develop as a result of this enrichment?

You will develop your understanding of the British Sign Language alphabet and key words so that you can have a full silent conversation.

The school learning attributes you would develop through this club include Good communicator and Motivation.

Who is the enrichment suitable for?

All KS4 students.

What is the time commitment?

You can study this in one of your enrichments per week, with the ability to opt for it one term at a time.

Further information:

For further information, please speak to Mrs Bird.





What is this enrichment about?

Do you know about the various nutritional value of various foods? Which foods are full of carbohydrates, natural sugar or protein? This enrichment activity is about teaching you how to cook more balanced, healthier meals, how to cook dishes from various cultures around the world as well as how to cook on a budget (something which is becoming increasingly important with rising food prices). You will also learn about food hygiene so that you are less likely to poison yourself or others.

How will this enrich my learning?

Cooking and eating more balanced meals will help support a healthier lifestyle. This means not only will you feel better about yourself, but your concentration levels will improve, and you will feel more energised! This will support you in both your learning in school as well as in the activities you take part in outside of school e.g. football, cadets and gymnastics. You will also learn about different cultures through

preparing, and of course eating, foods from different cultures around the world.

What will I develop as a result of this enrichment?

You will learn how to cook meals that meet the main food groups, so you are able to have a more balanced diet alongside a greater appreciation of cultures from around the world.

The school attributes you will develop through this enrichment activity include:

- Inquisitive – what foods go well together, and which don't?
- Thoughtfulness - What foods from around the world do you enjoy?
- Links Concepts – Using the main food groups plan and prepare healthy, balanced meals.

Who is the enrichment suitable for?

All KS4 students.

What is the time commitment?

You can study this in one of your enrichments per week, with the ability to opt for it one term at a time. Be aware there will be a small cost for ingredients.

Further information:

For further information, please speak to Miss Carter.



What is this enrichment about?

This will involve you developing your fieldwork and observational skills to study the geography of Temple Moor and its grounds and the key human and physical features of its surrounding environment through investigating the local area such as traffic counts, biodiversity and the sustainability of the school.

How will this enrich my learning?

This will give you an understanding of how fieldwork is undertaken in Geography. We will come up with a hypothesis, undertake the fieldwork as a group, work out the best way to present our data, and then analyse it to discover our findings. This could include things like completing traffic surveys and biodiversity studies.

What will I develop as a result of this enrichment?

- Teamwork
- Analytical skills
- Data presentation techniques
- An understanding of how to use different fieldwork equipment.

Who is the enrichment suitable for?

KS3 students.

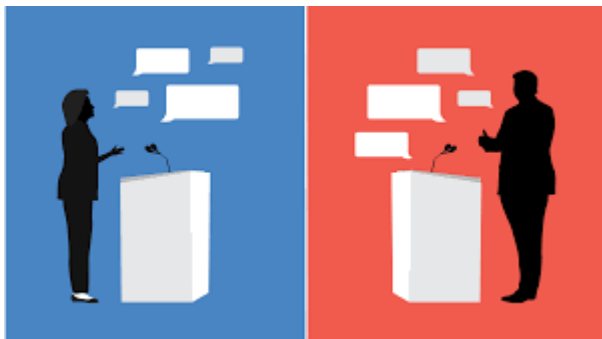
What is the time commitment?

You can study this in one of your enrichments per week. The session will last for 30 minutes (2:35-3:05).

Further information:

For further information, please speak to Mrs Mayfield or Miss Webb





What is this enrichment about?

Debates provide you with a platform to share your views and to try and convince other people to agree and share your point of view. They are often used prior to elections where potential candidates try to persuade people to vote for them. As part of this enrichment activity you will be given a question to debate such as:

'Climate change is a natural process.' How much do you agree with this statement?

How much is globalisation responsible for the issue of food miles? Discuss.

'The impacts of earthquake activity vary with levels of economic development.' How far do you agree with this statement?

You will then work in teams to research and create an argument before going head to head with a group of students or staff that have an opposing view – its up to you to be convincing and win over as many people as you can!

How will this enrich my learning?

This will support your learning through communication and group work. You will need to be reflective and demonstrate initiative on your feet as you listen to the viewpoints that differ from yours so that you are able to articulate a suitable counter argument in a timely manner. You will also develop the school learning attributes Good communicator and Resilience.

What will I develop as a result of this enrichment?

By taking part in the Debate club you will become more persuasive speakers, critical listeners, analytical thinkers and engaged citizens. This will support you in school in extended writing tasks as well as outside of school in being more articulate as well as being aware of events that affect us all.

Who is the enrichment suitable for?

All KS4 students.

What is the time commitment?

You can study this in one of your enrichments per week, with the ability to opt for it one term at a time.

Further information:

For further information, please speak to Miss Mayfield.



What is this enrichment about?

STEM (Science, Technology, Engineering and Mathematics) building challenge is about developing skills which are used in STEM careers to allow you to improve your problem solving and team work skills. If you chose this activity you will be given a task and a tray of equipment which can be used to complete your task. You will then have a research session to develop ideas, a trial session to refine your ideas and then a sharing session to identify the winning team and reflect on your creation.

Examples of activities include:

- How to suspend a 1kg mass 10 cm above the ground
- To make a floating vessel which can hold the largest mass
- To construct a vehicle which can travel the furthest
- To construct a vehicle which can travel the fastest.

How will this enrich my learning?

This will enable you to apply the school qualities in demonstrating initiative in creating solutions for

each task. You will then demonstrate resilience and reflection when reviewing and completing the tasks under a set time period. The tasks will also build on your scientific knowledge gained in lessons by applying this to different situations.

What will I develop as a result of this enrichment?

You will develop your teamwork and communication skills as tasks will be completed in groups as well as the school attributes Thoughtfulness and Inquisitive.

Who is the enrichment suitable for?

All KS4 students.

What is the time commitment?

You can study this in one of your enrichments per week, with the ability to opt for it one term at a time.

Further information:

For further information, please speak to Mrs Jellett.



What is this enrichment about?

Join the reading group for a term and be part of a group of students who read and talk about their favourite books. What did you enjoy the most about the story, which character would you most like to meet from the book and which villain would you least like to meet and why? How did the author help set the scene and create tension and suspense?

How will this enrich my learning?

This will enable you to apply the school's qualities as you reflect on the books that you read. You will learn tolerance as you listen to other people's views and opinions.

What will I develop as a result of this enrichment?

You will develop a love for books as well as develop the skills in analysing what you enjoyed the most and the least from each book. At the same time, you

will develop the school attributes of Good communicator and Inquisitive.

Who is the enrichment suitable for?

KS4 students who love reading.

What is the time commitment?

You can study this in one of your enrichments per week, with the ability to opt for it one term at a time.

Further information:

For further information, please speak to Mrs Cartwright.





What is this enrichment about?

England has a well established chess club scene with more than 600 over the board clubs across all parts of the nation, many of them with junior and online clubs in addition to face-to-face club nights and competitions. We want to add to this!

We're not just looking to train up the next Nino Batsiashvili or Felix Blohberger, we're also wanting people to want to learn the game; people who already enjoy the game and just want to play; and people who want to improve their knowledge and skills.

How will this enrich my learning?

Learning any new game helps improve your mind, chess in particular helps your thinking and problem-solving skills and supports building your self-confidence as well as developing the school attributes Self evaluative and Thoughtfulness.

Every day and in every lesson, you face problem solving challenges, wouldn't life be that little bit better if you had the improved skills to tackle these problems a little faster and a little better?

What will I develop as a result of this enrichment?

You will develop your understanding of the game and how to play not just the game, but also your opponent.

Who is the enrichment suitable for?

All KS4 students.

What is the time commitment?

You can study this in one of your enrichments per week, with the ability to opt for it one term at a time.

Further information:

For further information, please speak to anyone in the Maths faculty.





What is this enrichment about?

You will learn and play the games Ligretto, SET and Dobble.

Ligretto is a game of speed and agility. Get rid of the cards in your Ligretto Stack before your opponents by quickly placing cards of the same colour in numerical order on the piles in the centre of the table!

SET is a board game where any table becomes the board. It is a highly addictive, original game of visual perception. The goal is to be the first to see a SET from the 12 cards laid face up on the table.

Dobble is a speedy observation game where players race to match the identical symbol between cards. Reliant on a sharp eye and quick reflexes, Dobble creates excitement for while keeping every player involved in the action.

How will this enrich my learning?

Learning new skills has been shown to make more connections in the parts of your brain that are involved in muscle control and sensory perception, in a similar way to how your muscles get stronger from exercising regularly.

What will I develop as a result of this enrichment?

You will develop your observation, decision making, cooperation, planning and pattern spotting. You will learn to become a good communicator improve your patience whilst having lots of fun! Card games are good for your brain because they improve your coordination, memory and sequencing.

Who is the enrichment suitable for?

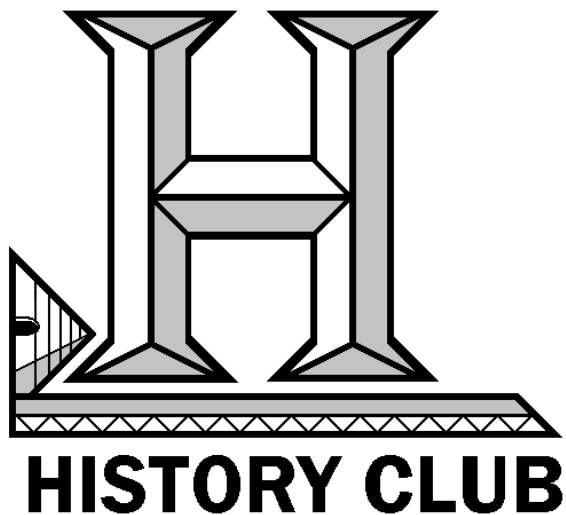
KS4 students.

What is the time commitment?

You can study this in one of your enrichments per week, with the ability to opt for it one term at a time.

Further information:

For further information, please speak to Mrs Parkes



What is this enrichment about?

History Club will allow you to explore different communities, ways of life and cultures which you may not have already have learnt about in lesson. If you chose this activity you will be able to independently research and create resources on a topic which you find interesting in the past. Before you start independently researching your own topic, you will learn about some mysteries and conspiracy theories from the past such as:

- Is there a city of Atlantis?
- Was there a real King Arthur?
- What happened to the Princes in the Tower?
- The Gunpowder Plot of 1605 – Was Guy Fawkes really to blame?
- Why was the enigma code hard to break?
- Who killed JFK?
- Would NASA really fake a moon landing?
- What really happened before 9/11?

How will this enrich my learning?

This will enable you to apply the school's qualities in demonstrating initiative and resilience in creating presentations which will be performed in the second half term. You will demonstrate that you seek challenge by being able to independently research parts of a topic of your choice.

What will I develop as a result of this enrichment?

Your work will enable you to understand more about the past and how historians find out about the past. This will enable you to ask questions of the past, and the skills in which to independently research and come to conclusions.

This will support your development of the school attributes, in particularly links concepts and inquisitive.

Who is the enrichment suitable for?

KS4 students.

What is the time commitment?

You can study this in one of your enrichments per week, with the ability to opt for it one term at a time.

Further information: For further information, please speak to Mr Audsley.

Flight Club

Subject: Mathematics

Enrichment category: My Mind



What is this enrichment about?

Are you the next Luke Littler?

Starting with a score of 501 you have to try and get down to zero the quickest, by getting high numbers on the board – but you must end precisely on zero with a double, so there's a lot of maths and mental gymnastics involved.

How will this enrich my learning?

Playing darts will develop your precision, focus and hand-eye coordination as well as the enhancement of mathematical skills by adding, multiplying and subtracting as you play games such as 501. However, beyond simple arithmetic, darts encourages strategic thinking as you must plan several steps ahead,

considering the best combinations to close the game efficiently. This strategic aspect exercises higher-order thinking skills such as planning, foresight, and problem-solving.

What will I develop as a result of this enrichment?

“Playing darts can have profound effects on the brain, providing a dynamic mental workout that sharpens cognitive skills, nurtures neuroconnectivity and provides a holistic approach to brain health,” says **Dr S Allder, Consultant Neurologist**

Who is the enrichment suitable for?

KS3 students.

What is the time commitment?

You can study this in one of your enrichments per week, with the ability to opt for it one term at a time.

Further information:

For further information, please speak to Mr Godrich.