

# Year 8

## Option Choices Booklet 2025

# Contents



Introduction	Page 3
A split options process	Page 4
Options process timeline	Page 5
Picking option 1	Page 6
Different types of qualifications	Page 7
Options next year	Page 8
The English Baccalaureate	Page 9
Help and advice	Page 10
Options Do's and Don'ts	Page 11
How to choose options	Page 12
Careers guidance	Page 13
Frequently asked questions	Page 14-17
 <u>Option one subject information</u>	
Construction and the Built Environment (BTEC)	Page 19
Dance – Performing Arts (BTEC)	Page 20
Health and Social Care (BTEC)	Page 21
PE (GCSE)	Page 22
Photography (GCSE)	Page 23
Psychology (GCSE)	Page 24
Separate (Triple) sciences (GCSE)	Page 25
Sport (Cambridge Nationals)	Page 26
Options summary	Page 27

This booklet is designed to provide useful information about the option process at Temple Moor, to allow students to make informed choices as to the options they pick. The information contained within explains what the options process involves and gives students and parents/carers information about the courses which we offer.

## What will students study at Key Stage 4?

Our aim is to give students access to a broad and balanced curriculum, which promotes knowledge and ensures that students leave school highly literate, numerate and well rounded. The curriculum we offer allows students to pursue a range of qualifications that will support their future ambitions and provides access to high quality pathways for further study and apprenticeships after Year 11.

English Language, English Literature, Maths, Science are compulsory courses that students must study until the end of Year 11. Students will gain at least one GCSE from each of these courses.

In addition to these, all students also participate in Core PE, Religious Education and Personal Development lessons.

However, as students move into Key Stage 4, they get the opportunity to choose to specialise in some subjects and gain access to new subjects which are not covered at Key Stage 3. Students select 4 options choices in total; one of these is picked this year, to start in September 2025, and three more options are chosen next year at the end of Year 9 (to begin in September 2026).



# A split options process



At the end of Year 8, students are only required to choose one option. Students will continue with all the Key Stage 3 subjects they currently study but will pick up an additional option to add further breadth to their curriculum. This option will be one of the qualifications that they will receive at the end of Year 11 after 3 years of studying.

At the end of Year 9, students will have a second options process where they select the final three options which they wish to undertake qualifications in. These four options, together with the compulsory subjects given on the previous page, will then form the suite of qualifications which students will take at Key Stage 4.



Year	Option 1	Option 2	Option 3	Option 4
8	Chosen at the end of Year 8			
9	Studied during Y9, 10 and 11  Examined in May/June 2028 for most courses	Chosen at the end of Year 9	Chosen at the end of Year 9	Chosen at the end of Year 9
10		Studied during Y10 and 11	Studied during Y10 and 11	Studied during Y10 and 11
11		Examined in May/June 2028 for most courses	Examined in May/June 2028 for most courses	Examined in May/June 2028 for most courses

We offer a wide range of subjects for students to choose from. It is important that students choose a course which will suit them in terms of course content, style of delivery, assessment method and what they can progress onto after Year 11. As a result, we offer a range of practical, academic and applied courses, with a range of different assessment methods, from which students can pick.

To ensure that students are properly supported and guided to make an informed choice that will enable them to be successful, the school provides support and guidance to students throughout the process.

# Timeline for the options process



Options process launched in assembly

Week commencing 10th February



Options evening (5-7pm)

Monday 24th February



Taster sessions picked by students

End of the week commencing 24th February



Taster lessons undertaken by students

Week commencing 10th March



Final deadline for submission of options forms

Friday 28th March



Students notified of allocated courses

Late April

# Different types of qualification



What is the difference between a GCSE and a Technical Award (BTEC or Cambridge National)?

The primary difference between a GCSE qualification and other types of qualification is in the style of assessment and the nature of the course.

Technical Award qualifications include BTEC or Cambridge National qualifications, which are equivalent to one GCSE. These Technical Awards are rooted in 'real life' experiences of the world of work e.g. the construction or care industries. All Technical Award qualifications include an externally assessed (examined) unit which accounts for at least 40% of the course and is taken at the end of Year 11.

Technical awards also have components which are assessed through controlled assessment. The controlled assessment must be completed within "assessment windows" which are set by the exam board. As a result, good attendance throughout the course is paramount to succeeding on these courses, as absences during these windows will limit the grade students can achieve. We will look at attendance during Year 8 to determine a student's suitability to study these courses.

Technical Awards are graded using a scale from Level 1 Pass up to Level 2 Distinction\*.

GCSE qualifications are all examined at the end of Year 11 and no longer have any coursework element to them. English also has a speaking assessment in addition to the exams, with the speaking assessment counting toward the non-examined assessment of the course. All GCSE qualifications are assessed using a 9-1 grading system (9 being the highest), which has replaced the previous A\*-G grading.

OLD GCSE GRADING STRUCTURE	NEW GCSE GRADING STRUCTURE	BTEC TECH AWARD GRADING STRUCTURE
A*	9	Level 2 Distinction*
	8	
A	7	Level 2 Distinction
B	6	Level 2 Merit
	5	
C	4	Level 2 Pass
D	3	Level 1 Distinction
E	2	Level 1 Merit
F	1	
G	U	Level 1 Pass

If students/parents/carers require any further details of this, please contact Miss Matthews (KS3 Phase leader) using the Arbor app.

# Picking Option 1



Students need to select their first Key Stage 4 option from the list below, which will begin in Year 9. In addition to picking this option, they also need to select a reserve choice, in case their first-choice option cannot run.

Option 1 - 3-year course:

Pick one of the following choices, plus one reserve choice.

BTEC Construction and the Built Environment

BTEC Dance (Performance) – this course is only offered this year.

BTEC Health and Social care

GCSE Photography

GCSE Psychology (if eligible)

GCSE Separate (Triple) Sciences (if eligible) – this course is only offered this year.

Cambridge Nationals Sports Studies

\* Please note that these courses will only run if there is sufficient uptake from students.

GCSE Psychology and GCSE Separate sciences (Triple science) are only available to students who are eligible to take these. This is based upon progress in English and Mathematics for Psychology, and progress in Science for Triple Science. Eligibility will be communicated to parents and students via a sticker which will be in students' planners.

# Options next year



To help students to make informed choices this year, here is an indicative list of the options that are likely to be offered next year. Students will be guided onto a pathway (Core or Core plus) in Year 9 to help them make these decisions.

Option 2 - 2-year course. Pick one from this list:	Option 3 - 2-year course Pick one from this list, <u>plus</u> one reserve choice:	Option 4 - 2-year course Pick one from this list, <u>plus</u> one reserve choice:
GCSE Geography GCSE History	<p><u>If on Core Plus pathway:</u> GCSE French (if studied at KS3) GCSE German (if studied at KS3) GCSE Spanish (if studied at KS3)</p> <p><u>If on Core pathway:</u> GCSE Business Studies BTEC Construction and the Built Environment GCSE Design Technology BTEC Enterprise GCSE French (if studied at KS3) GCSE German (if studied at KS3) GCSE Geography Eduqas Hospitality and Catering BTEC Performing Arts - Drama GCSE Spanish (if studied at KS3) Cambridge Nationals Sport Studies</p>	GCSE Business Studies BTEC Construction and the Built Environment BTEC Creative Media Production GCSE Design Technology (Product Design) BTEC - Drama (Performing Arts) BTEC Enterprise GCSE Fine Art GCSE Graphic Design GCSE Computer Science BTEC Health and Social Care GCSE History Eduqas Hospitality and Catering BTEC Music Practice GCSE Psychology (eligible students only) BTEC Fashion & Textiles

In addition, all students will study GCSEs in English Literature, English Language, Maths and Combined Science qualifications, which are compulsory.

Please note that whilst the options above are listed in good faith, they may be subject to change (dependent upon uptake and future staffing). Therefore, students should not rely on them running next year when choosing their option 1 subject this year.

Next year, students must also choose courses which are different to the GCSE/BTEC they select in option 1 this year.

# The English Baccalaureate



What is the English Baccalaureate?

The English Baccalaureate (EBacc) is a suite of qualifications which have been identified by the Government as being facilitating in terms of promoting academic rigor and developing powerful knowledge. It is not a qualification in itself, but recognises students who achieve Grade 5 in GCSE English, mathematics, sciences, a language and a humanities subject (History or Geography).



Why is the EBacc a consideration in my options choices?

Research suggests that studying this full suite of subjects improves students' outcomes across all subjects due to the high-level literacy, numeracy and transferrable knowledge they promote. These qualifications also maintain education and employment options when students leave school and are viewed favourably by Russell Group universities.

The Department for Education has produced a parent leaflet, providing further details about the English Baccalaureate, on the following website:

[https://assets.publishing.service.gov.uk/government/uploads/system/uploads/attachment\\_data/file/761031/DfE\\_EBacc\\_Leaflet.pdf](https://assets.publishing.service.gov.uk/government/uploads/system/uploads/attachment_data/file/761031/DfE_EBacc_Leaflet.pdf)

How does Temple Moor's curriculum fit with the EBacc?

Our Key Stage 3 provides a strong foundation in these subjects for all students, meaning that all students should be able to access these GCSEs with confidence.

During the Year 9 options process (next year), we guide students onto pathways, based on whether we feel this suite of qualifications is most appropriate for them. All students will study English language and literature, Maths, Science and a humanity, but we offer pathways which guide pupils in making a choice about languages.

Core Plus is a pathway which guides students to select options which cover the full EBacc suite of qualifications. Core pathway provides students with a more open choice of qualifications as they are not required to sit a language. However, all students have access to the full EBacc suite of qualifications if they wish to pursue them, irrespective of which pathway they are on.

There are many sources of help and advice that students can access in making decisions about their options. Different people often give advice from different points of view. It is important to realise and understand this when seeking help.



# Do's and Don'ts for students



## DO's



DO choose subjects YOU want to do and which suit YOUR aspirations. You are the person who has to do the work.



DO choose subjects that you are good at and that you enjoy.



DO talk to your tutors, subject teachers and your parents/carers to ensure you get their advice. They want to help you.



DO consider what you might want to do after Year 11 in terms of further education, apprenticeships and future employment.



DO challenge yourself. Don't be put off choosing a course which you like just because you think it will be difficult. You will be surprised at what you can achieve!

## DON'TS



DON'T simply choose a subject because your friends have chosen it. They may have different career interests to you, and there is no guarantee you will be in the same class as your friends. Think about your own future.



DON'T choose a subject because you like the teacher you have this year. They might not teach you next year.



DON'T choose a new subject just for a change. Find out about it first to make sure it is right for you, as once you start it you cannot change.



DON'T make any subject choices without having read and understood the information in this booklet and participated in taster lessons on w/c 10<sup>th</sup> March.

# How to choose options



All students will have a year group assembly during the w/c 10<sup>th</sup> February, where the options process will be introduced and explained to them. Form time will also be used to discuss the process and the choices available to students.

The school will be hosting an Options evening for students and parents/carers, which will be on Monday 24<sup>th</sup> February from 5-7pm. During this, students and parents/carers will have the opportunity to attend a presentation about the options process, as well as finding out more about the courses from the subject teams who teach them, so that students are empowered to make the most appropriate choices for them.

## Submitting options choices

Having attended Options evening, students and parents/carers will have the opportunity to reflect on and discuss the most appropriate course choices before submitting their preferences. A taster lesson will be provided during the week commencing 10<sup>th</sup> March.

After this, student choices should be submitted by completing the options form and returning this to their form tutors. Options choices must be received no later than Friday 28<sup>th</sup> March.

Any student who has not chosen their options by this deadline will be supported to make their choices in school, but may have to pick from a reduced selection, as priority will be given to students who have submitted their choices by the deadline.

## What happens after 28<sup>th</sup> March?

Once all course choices have been made, they will be collated, analysed and students will be assigned to groups. Subjects that are undersubscribed (typically less than 20 in a group) are unlikely to run, and reserve choices will then be used. It may take several weeks after Easter before choices are confirmed. Parents/carers will be informed via the Arbor app of the choices which have been allocated to students.

The options process provides students with an opportunity to begin to consider which career paths might be of interest in them, as this will potentially guide them in making options choices.

Additionally, all students will be provided with the opportunity to request a careers interview with our Pathways advisor, Mrs Pasfield. Students should request this by contacting Mrs Pasfield directly (her office is in the atrium) or by requesting an appointment to be made via their form tutors.

Parents/carers may also wish to discuss potential career paths with students and undertake further joint research with them. To aid parents/carers in doing this, we have put together a range of useful links and resources. These can be accessed via the following web links:

<https://www.tmhs.co.uk/for-students-parentscarers/careers-information-guidance-progression/career-and-labour-market-information/>

<https://www.tmhs.co.uk/for-students-parentscarers/careers-information-guidance-progression/useful-websites/>

<https://www.tmhs.co.uk/for-students-parentscarers/careers-information-guidance-progression/parent-information/>

# Frequently asked questions



How should students and parents/carers use this booklet to make decisions?

This booklet is designed to give information about the process and the subjects that we offer. However, it is not a substitute for attending the options evening to hear teachers' insight about their subjects. Therefore, this booklet should be used by students to begin to investigate subjects they might be interested in finding out more about, guided by the following questions:

- 1). Does the subject sound like one that I would like to study?
- 2). Will I do well in the subject?
- 3). Will the subjects support continued study in sixth form/college/apprenticeships and beyond?

Parents/carers should use this booklet as a basis for having conversations with students to help guide them through the decision-making process and ensure that they are making choices on the basis of sound reasoning.

Are the courses within option 1 guaranteed to run?

Whilst all courses are offered in good faith, the school has a limited number of staff, resources and classrooms, which means that a course will only run if there is sufficient demand from the students who opt for it. Generally, courses with less than 20 students who pick them are unlikely to run.

If a course is oversubscribed, we will endeavour to put additional classes on to accommodate this. However, in rare circumstances where the availability of specialist staffing or facilities mean this is not possible, some students may also be guided to take their reserve choice.

Do students have to take a reserve choice?

Yes, students are required to list a reserve choice. This is because there is the possibility that their first-choice course will not run. In these circumstances, students would be allocated to their reserve choice and therefore it must be a course which they are prepared to take. Students who do not select a reserve choice will be supported to make an alternative choice, if required, but may have to select from a reduced number of courses as priority will be given to students who have selected reserve choices.

# Frequently asked questions



Will students definitely get their first or reserve choices?

This is certainly our aim, but there are sometimes circumstances (such as low student uptake or staffing changes) where this may not be possible. In these circumstances, we would communicate with parents/carers and students to explain the circumstances that led to this and to find a suitable alternative. There is also the possibility that the courses, which we were not able to run this year, could be opted for in another option block next year. However, in previous years, the vast majority of students were successful in being allocated to their first or reserve choices.

When is the deadline for submitting the final options form?

Student choices will be completed on a paper form provided and submitted to their form tutor. Options choices must be received no later than Friday 28th March. Forms not submitted by this time may result in students being limited to options which have spaces remaining on them.

Many Option 1 subjects are new. How do I know whether to choose them?

There are a number of subjects which students will have had no exposure to whilst in Year 7 and 8. It is therefore our intention to provide students with taster lessons for these subjects during the week commencing 10<sup>th</sup> March. This will give them a taste of what the subject entails and whether they are likely to enjoy it. Students will be asked by tutors which course they would most like a taster in. Additionally, this will be supported by options evening, during which students and parents/carers will have the opportunity visit subject areas of interest. This will provide valuable insights into the course, from the staff who teach it.

Why are Option 1 subjects limited to new courses?

Our intention in offering Option 1 choices in Year 9 is to broaden the curriculum which students experience. We maintain a full suite of Key Stage 3 subjects in Year 9 as well, to ensure that the curriculum is not narrowed too early and that students receive their entitlement to study a full Key Stage 3 suite of subjects. As a result, we only offer courses in Option 1 which do not overlap with the Key Stage 3 subjects, to avoid repetition. The subjects studied at Key Stage 3 will be available to opt for next year in Options 2, 3 and 4.

# Frequently asked questions



Can students switch courses if they change their mind at a later date?

Unfortunately, once a course begins, we do not allow students to change courses unless there is a medical need, supported by evidence, which means students can no longer access that course. These courses will be studied to completion at the end of Year 11. This is because once a course begins, all material covered counts toward the final GCSE/Technical award assessment, and students would be behind if they were to join a course late. This places undue pressure on students and staff. It is therefore important that students select a course that they enjoy and use the options evening and taster lessons as opportunities to find out what the courses entail.

Can the same subject be selected again in next year's options process?

No, a subject can only be taken once as only one qualification can be awarded in it by awarding bodies. Therefore, students must select different subjects next year.

Are all of the subjects in this year's options available to select in options next year, if I don't choose them this year?

Most subjects in Option 1 are offered again in options next year, but Triple Science and Dance are only offered in this year's options. Students wishing to pursue these qualifications must pick them this year. It should also be noted that, whilst other options will be offered again next year, there is no guarantee that they will run as this will be dependent on student numbers (which will be reduced by some having opted for the subject this year). As such, students are advised to select the option they most want to do in Option 1 and not to rely on those options being reoffered as part of next year's options process.

Are students mature enough to make a decision about options in Year 8?

Temple Moor has offered an option in Year 8 for many years and students have demonstrated maturity in making sensible choices which have gone on to provide them with high quality outcomes. We support all students throughout the process with high quality guidance and advice in choosing options, both in Year 8 and Year 9. Furthermore, our experience has been that the staggered nature of picking options over two years has actually helped students in making choices and in viewing the process as less daunting.

# Frequently asked questions



Are all subjects open to all students?

We operate an inclusive approach to our curriculum, meaning that all students can access the vast majority courses. The only exceptions to this are GCSE Triple Science and GCSE Psychology, which are only offered to eligible students, based on their assessment data from Key Stage 3 Science and Maths as both of these courses have high scientific and mathematical content.

We also operate a policy of reviewing attendance over the past academic year, for students who choose Technical Award courses e.g. BTEC. Where a student's attendance is classed as being persistently absent (below 90%), we would make individual decisions about a student's suitability for Tech award courses (considering context and extenuating circumstances), as the assessment windows throughout the course mean that a student is unlikely to succeed unless they have good attendance throughout Year 9-11.

How does the Temple Moor curriculum offer compare to other schools?

We aim to support students in studying courses which enable them to pursue their goals. As such, we offer a broader and more diverse selection of subjects than most other schools. There are 17 course categories approved by the Department for Education for schools to offer, and we offer courses in 14 of these categories. This compares very favourably to schools locally and nationally.

Who should I contact if I need further details about options?

If you have a specific query about a subject, then these can be discussed with subject teachers during Options evening on 24<sup>th</sup> February, between 5pm and 7pm. If you have any further questions after this point, then please contact the department leaders via the school main email.

If your query is about completing or submitting the options form, please contact Mrs Pickering via the Arbor app. If your query relates to the general options process, then please contact Miss Matthews (KS3 Phase Leader) via the Arbor app. When communicating using the app, please label your message clearly with who the message is intended for so that it can be directed to that person.

# Frequently asked questions



What should I do if I lose my options form?

If you lose your options form, please use the Arbor app to contact Mrs Pickering who will print another form.

# Option 1 Subjects



BTEC Construction and the Built Environment

BTEC Dance (Performance)

BTEC Health and Social care

GCSE Photography

GCSE Psychology \*

GCSE Separate Sciences (Biology, Chemistry, Physics) \*

Cambridge National Sport Studies

\* eligibility criteria applies for these two courses. Students will be informed if they are eligible to opt for these courses, using stickers in their planner.

# BTEC Construction and the Built Environment



## Overview of the course:

This course allows students to gain a broad knowledge and understanding of the construction industry. Students develop skills such as interpreting and analysing information, identifying the infrastructure required for safe and efficient work, and understanding how client needs can shape building design.

## What will you learn?

Students cover a variety of topics throughout the course, including:

- Construction technology
- Construction and design (architecture).
- Scientific and mathematical application for construction
- Carpentry and joinery principles and techniques.

## How will you be assessed?

You will complete 4 units over the program.

Unit 1: Construction technology (externally examined).

Unit 2: Scientific and mathematical principles in construction.

Unit 3: Construction design.

Unit 6: Exploring carpentry and joinery techniques.

Unit 2, 3 and 6 are assessed through coursework.

## Skills that you will develop:

- Design and drawing skills
- ICT and presentation skills
- Practical workshop skills (carpentry)
- Critical thinking
- Independence

## What do our students say?

"I enjoy construction as it explores loads of different careers in the industry so I can see what I like" (Rohan)

"I would suggest construction because there are so many different skills you learn and gets your ready for a job in construction." (Raheem)

## Progression routes and career opportunities:

This course prepares students to progress onto the Level 3 BTEC Nationals in Construction and the Built Environment at college.

It is also good preparation for apprenticeships within the construction industry and accompanying trades. It also links clearly to a range of professions such as architect, civil engineer, site manager or tradesperson.

## Link to the exam board specification:

<https://qualifications.pearson.com/en/qualifications/btec-firsts/construction-and-the-built-environment-2013-nqf.html>

## Further information:

For further information, please speak to Mr Palliser.

# BTEC Dance (Performing Arts)



## Overview of the course:

The course is designed to teach a variety of dance styles, alongside the skills that students will need to successfully choreograph dances.

## What will you learn?

This course combines theory and practical performances, studied across three components.

Component 1 explores aspects of the Performing Arts industry, through the study of three set repertoires. Component 2 involves rehearsing, performing, and evaluating a set repertoire. Component 3 involves creating choreography based on a stimulus and performing this to a live audience.

## How will you be assessed?

For each assessment, the exam board will release a PSA (Pearson Set Assignment) which must be completed within a specific assessment window. Attendance and engagement are extremely important due to assessments being completed throughout the course. Component 1 and 2 are internally assessed but are externally moderated by the exam board. Component 3 is externally assessed.

- Component 1 - 30% - Exploring the Performing Arts (Preparation time in Year 10 Term 1; Assessment window in Year 10 Term 2)
- Component 2 – 30% - Developing Skills and Techniques in the Performing Arts

(Preparation time in Year 10 Term 3; Assessment window in Year 11 Term 1)

- Component 3 – 40% - Performing to a Brief (Year 11 Term 2)

## Skills that you will develop:

- Physical and Interpretative Skills
- Dance Appreciation
- Confidence and creativity
- Teamwork
- Choreography skills

## What do our students say?

"I enjoy learning new dance styles and techniques"

"Dance helps me to show emotions and to develop my creativity"

"Dance allows me to have freedom in making up my own choreography"

## Progression routes and career opportunities:

This course prepares students to progress onto a Level 3 Dance course at a Post 16 provider. Courses in Dance are available at degree level and possible careers include: Dancer; Choreographer; Dance/PE teacher; Physiotherapist.

## Link to the exam board specification:

<https://qualifications.pearson.com/en/qualifications/btec-tech-awards/performing-arts-2022.html>

## Further information:

For further information, please speak to Mrs Johnson (Programme Leader of Performance) or Miss Riley (Dance teacher).



## Overview of the course:

Students learn how individuals develop physically, intellectually, emotionally and socially and how different factors can influence their development. Students also develop an understanding of how significant life events can impact individuals. A great emphasis is placed on students learning about the importance of demonstrating care values in health and social care settings. Students will also explore factors which can impact an individual's health and wellbeing.

## What will you learn?

Component 1 – Human lifespan and development.

Component 2 – Health and Social care values.

Component 3 – Health and Wellbeing in relation to specific case studies.

## How will you be assessed?

Component 1 and 2 – Coursework

Component 3 – External Exam

## Skills that you will develop:

- Research skills
- Presentation skills
- Extended writing skills
- Communication skills
- Organisation
- Independence
- Resilience

## What do our students say?

"I enjoy studying Health and Social Care because it is useful to relate the content to real-life experiences and scenarios. It has also helped me learn all the different potential careers I could go in too and the skills needed for these professions".

"Health and Social Care is a subject I would like to study further after school. I have felt really supported by my teachers and I like the coursework elements of the BTEC course".

## Progression routes and career opportunities:

This course prepares students to progress onto the Level 3 BTEC Health and Social care courses, which are offered at Temple Moor in the Sixth form. We also offer the NCFE CACHE Health and Social Care course to students in 6<sup>th</sup> form who would benefit from an extra year of learning.

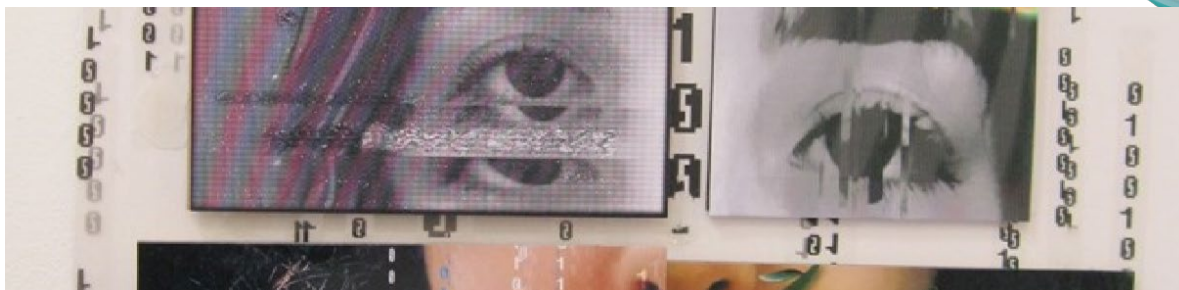
About 3 million people in the UK work in the health and social care sectors, which is equivalent to 1 in every 10 people. Demand for both health care and social care is likely to continue to rise due to the ageing population, so it is undisputable that it plays a key role in UK society. Studying this subject can lead to a wide range of careers including professions in the NHS, childcare sectors, teaching and many more.

## Link to the exam board specification:

[Health & Social Care \(2022\) | BTEC Tech Award | Pearson qualifications](#)

## Further information:

For further information, please speak to Miss Hodgson or any member of PE staff.



## Overview of the course:

The course builds upon your photographic and graphic design skills learnt at Key Stage 3. It will develop your creative skills in photography, drawing, computer graphics and image manipulation using ICT.

## What will you learn?

You will be guided through your GCSE Photography projects to:

- Work from an individual starting point
- Study the work of photographers and designers
- Plan your own personal designs
- Use a wide variety of media (digital and traditional)
- Produce work using ICT, a SLR and a camera phone

## How will you be assessed?

60% of the qualification is assessed through coursework (students develop ideas from individual starting points).

40% of the qualification is assessed through an Externally Set Assignment. One component of work followed by a 10-hour period of supervised unaided work.

## Skills that you will develop:

- Using a SLR camera
- Using Photoshop
- Using photographic lighting
- Understanding photographic composition
- Understanding presentation

## What do our students say?

'The course has taught me to be more confident when looking through a camera lens to take a picture and when using Photoshop.'

## Progression routes and career opportunities:

This course prepares students to progress onto the A-level Photography, Fine Art or Graphic Design courses which we offer at Temple Moor in the Sixth form.

Courses in Photography are available at degree level and possible careers include: Marketing; Photography; Media; Fashion; Journalism.

## Link to the exam board specification:

<https://www.aqa.org.uk/subjects/art-and-design/gcse/art-and-design-8201-8206>

Further information: For further information, please speak to Mr Cashion (Art leader) or any member of the Art faculty.



## Overview of the course:

Psychology is the scientific study of mind and behaviour – it is a fascinating and engaging subject in which you will gain understanding of human behaviour in a wide range of contexts. Through the satisfying and worthwhile content, you will develop knowledge and skills which you will apply to your everyday life! This qualification has a specific focus on promoting mental wellbeing and is supported by the mental health charities Time to Change, Mind and Rethink Mental Illness.

## What will you learn?

The GCSE Psychology course consists of seven units in total: Criminal Psychology, Development, Psychological Problems, Social Influence, Memory, Sleep & Dreaming and Research Methods.

All units, except research methods, require students to learn about key concepts, two key theories, two core studies and applications. 'Research methods' focuses on the ways that psychologists investigate behaviour, and we will also cover key principles in Neuroscience.

## How will you be assessed?

The GCSE is assessed through two exams at the end of Year 11:

- Paper 1 - (50%)
- Paper 2 - (50%)



## Skills that you will develop:

- Communication Skills
- Critical Thinking
- Extended Writing
- Research Skills
- Numeracy
- Ethical Debates

## What do our students say?

"Psychology provides a space to share your own views on behaviour and to take part in fun experiments"

"The course is really interesting and makes you think about the world differently! I also really like how it crosses over with subjects like Biology"

## Progression routes and career opportunities:

This course prepares students well to progress onto the A-level Psychology course, which we offer at Temple Moor in the Sixth form, as well as other Social Science A-Levels such as Sociology, Politics and Law.

An understanding of Psychology can benefit many careers, including but not limited to sports coaching, teaching, social work, NHS careers, marketing and criminal psychology.

## Link to the exam board specification:

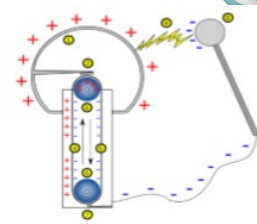
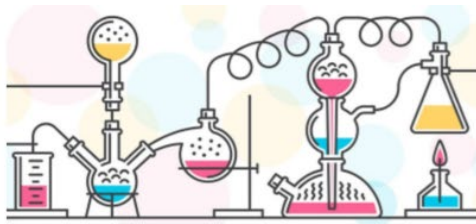
<https://ocr.org.uk/Images/309306-specification-accredited-gcse-psychology-j203.pdf>

## Further information:

For further information, please speak to Miss O'Brien or Mr Beecroft.

# GCSE Separate (Triple) Sciences

## (GCSE Biology, Chemistry and Physics)



### Overview of the course:

Students who have demonstrated strong attainment at Key Stage 3, will be eligible to opt to extend their GCSE Double award by studying separate (Triple) sciences. This means that they use one of their options to study for three GCSEs in Biology, Chemistry and Physics.

Students studying separate sciences will study a broader range of topics, including more complicated processes, broadening their scientific knowledge and understanding.

N.B. Depending on student numbers, this option may require students to move bands.

### What will you learn?

**Biology** – In addition to the Combined Science content, students will study topics including: microbiology; monoclonal antibodies; the brain; the eye; the kidneys; plant hormones; DNA structure; protein synthesis; speciation; cloning; decomposition; and food production.

**Chemistry** – In addition to the Combined Science content, students will study topics including: transition metals; nanoparticles; yield and atom economy; titrations; fuel cells; alkenes and alcohols; polymers.

**Physics** – In addition to the Combined Science content, students will study topics including: gas and fluid pressure; hazards and uses of radioactivity; nuclear fission and fusion; moments, gears and levers; momentum; wave behaviours; space physics.

### How will you be assessed?

Six examinations are sat in Year 11, each one 30 minutes longer than for Combined Science exams, to assess the additional content.

### Skills that you will develop:

- Critical Thinking
- Problem Solving
- Scientific investigation skills.
- Analytical and evaluative skills.

### What do our students say?

‘Each specialist teacher gives in-depth knowledge and insight into their subject making the lessons exciting and engaging’.

‘You gain a deeper understanding of science’.

### Progression routes and career opportunities:

This course prepares students to progress onto A-level Biology, Chemistry and Physics, which we offer at Temple Moor in the Sixth form.

Science can also lead onto a wide range of careers including: Medicine; Engineering; Veterinary Science; Pharmacology; Biotechnology; Material Science; Law; Forensic Science; Research; Robotics.

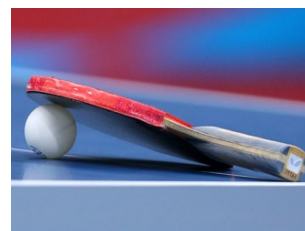
### Link to the exam board specifications:

<https://www.aqa.org.uk/subjects/science/gcse>

### Further information:

For further information, please speak to Mrs Murray or your current science teacher.

# Cambridge National Sports Studies



## Overview of the course:

The Cambridge National in Sport Studies has a sector-based focus, whilst also encompassing some core sport/physical education themes.

Learners have the opportunity to apply their skills and theoretical knowledge about physical activity to their own practical performance. They will learn about contemporary issues in sport such as funding, participation, ethics and role models, and sport and the media. Learners will develop an appreciation of the importance of sport locally and nationally, including participation and how this shapes the sports industry.

This course is an alternative to GCSE Physical Education – students cannot opt to study both of these subjects.

## What will you learn?

The Cambridge National Sport Studies course is made up of four components that equally contribute to the overall grade:

- Unit R051 Contemporary Issues in Sport
- Unit R052 Developing Sport Skills
- Unit R054 Sport and the Media
- Unit R055 Working in the Sport Industry

## How will you be assessed?

Component 1 is assessed through an external exam, whilst other components are assessed through coursework.

## Skills that you will develop:

- Confidence and independence to create material which reflects thoughtful planning, skills development and evaluation.
- Skills in a variety of sporting and social contexts.
- Advanced sports skills in team and individual sports, and as an official.
- Leadership values such as autonomy, confidence and empowerment.

## What do our students say?

"The different units in the course help us understand the different sporting careers available".

## Progression routes and career opportunities:

This course prepares students to continue onto further education courses such as A-level PE or Level 3 Sport, both of which we offer at Temple Moor in the Sixth form.

These courses can lead onto higher education or work within the sports industry, education or NHS.

## Link to the exam board specification:

<https://www.ocr.org.uk/qualifications/cambridge-nationals/sport-studies-level-1-2-j803-j813/>

## Further information:

For further information, please speak to Mr Coates (PE Subject Leader) or any member of the PE faculty

# Y8 Options form



Submit options using this form, which should be returned to Form Tutors by 28<sup>h</sup> March. If you have any issues in completing this, please contact Miss Matthews using the Arbor app.

Please select one first choice and one reserve choice subject from the list below:

Option 1 - 3-year course:

BTEC Construction and the Built Environment  
BTEC Dance (Performing Arts) – offered this year only.  
BTEC Health and Social care  
GCSE Photography  
GCSE Psychology (if eligible)  
GCSE separate (Triple) sciences (if eligible) – offered this year only.  
Cambridge Nationals Sport Studies

STUDENT NAME: \_\_\_\_\_ FORM: \_\_\_\_\_

First Choice:

Second (Reserve) Choice:

Parent/carers acknowledgement.

By submitting options choices, you are confirming that you have read the options booklet information and understand the following points:

- i). This is the first option which students will study until the end of Year 11 and will gain a qualification in. Three further options will also be chosen next year – the list of these is only indicative at this stage.
- ii). A broad spread of options choices is offered in good faith by the school, but some courses may not run if uptake is low or facilities/changes in specialist staffing/national qualification changes limit course availability.
- iii). Students may not be allocated their first choice and must, therefore, be prepared to study their reserve choice if this becomes necessary.
- iv). Once options have been started, students are not able to change courses.
- v). Separate (Triple) science can only be selected if students are eligible.
- vi). Triple Science may require some students to move bands, depending upon numbers opting to take it.

Signed: \_\_\_\_\_ Date: \_\_\_\_\_