

Enrichment Options Booklet KS4 2022 Term 2

Content page

My Body

Sports teams	Page 4
Fitness suite and racket games	Page 5
Exploring Dance Choreography	Page 6
Pilates	Page 7

My Creativity

DJ	Page 8
Creativity through Drama	Page 9
Film Critics	Page 10
Grand Designs	Page 11
Instrumental Workshop	Page 12
Still life drawing	Page 13
Textiles	Page 14

My Community

Do it 4 Youth	Page 15
Enterprise	Page 16
First Aid	Page 17
Language Immersion Challenge	Page 18
British Sign Language Club	Page 19

My Future

Can cook will cook!	Page 20
Debate club	Page 21
Personal Finance	Page 22
STEM Challenge	Page 23

My Mind

Book Club	Page 24
Chess Club	Page 25
Games club	Page 26
Conspiracy Club	Page 27

Enrichment



Our curriculum places great value on extra-curricular activities as a mechanism of enriching the taught curriculum, allowing students to deepen their understanding, see the applications of their studies, promote enjoyment and foster relationships, health, skills and broader interests. The purpose therefore of these enrichment activities is to provide our students opportunities to engage with life in modern Britain and make better informed decisions in adult life.

Temple Moor prides itself on offering a wide and varied suite of extra-curricular activities through the extensive number of clubs, sports teams and performances that our staff run after school, throughout the year, during the new period 6 which is 14:35 – 15:05 Monday to Thursday only (for two of these nights students will take part in their chosen enrichment activity and on the other nights students will take part in reading).

Students will opt for two extra-curricular clubs per term from the following categories which they will take part in on a Monday and a Wednesday:

- **My Body** – activities across a range of sports, including teams which participate in local and regional competitions.
- **My Creativity** – clubs and activities that provide opportunities for students to develop their imagination and inventiveness
- **My Community** – activities linked to supporting and developing student's understanding of their role within the local community
- **My Future** – projects and challenges which broaden students' perspectives beyond Temple Moor.
- **My Mind** – clubs and activities linked to academic subjects.

Enrichment forms an important part of students' daily experience at Temple Moor and provides opportunities for students to develop their initiative, ambition by seeking challenges as well as reflection and collaboration with their peers. This will support students whilst at school as well as preparing them for life once they leave Temple Moor.

Students will make their options shortly during form time for Term Two, choosing a first choice and a reserve for both Monday and Wednesday. If a student is unfortunate enough not to receive their first and second choice they will still have the option of choosing that enrichment activity the following term and will be spoken to directly by a member of staff to select an alternative activity.

What is this enrichment about?

This enrichment club allows you to train as part of a team in your chosen sport.

Further information:

For further information, please speak to Mr Coates or Mr Taberner

How will this enrich my learning?

This will give you additional time outside of your Core PE lessons to develop your skills as a team. The session will not just be games based but will be designed to improve your overall performance individually and collectively. This will hopefully then make your team more competitive in both external league and cup fixtures.

What will I develop as a result of this enrichment?

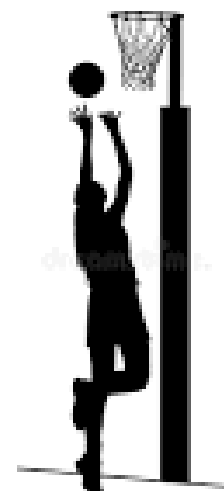
- Physical attributes
- Technical skills
- Tactics
- Teamwork
- Leadership

Who is the enrichment suitable for?

Students who would like to represent the school in football, rugby or netball.

What is the time commitment?

You can study this in one of your enrichments per week. The session will last for 1 hour (2:35-3:35). There is also the expectation that students will give up additional time to represent the school in both home and away fixtures.



What is this enrichment about?

This enrichment club allows you to train as part of a team in your chosen sport or develop your physical, social and emotional wellbeing each week. The three sports on offer this term will be Badminton, Fitness and Table Tennis.

How will this enrich my learning?

This will give you additional time outside of your Core PE lessons to develop your skills as an individual or partner. The session will not just be games based but will be designed to improve your overall performance individually and collectively.

What will I develop as a result of this enrichment?

- Physical attributes
- Technical skills
- Tactics
- Teamwork
- Leadership



Who is the enrichment suitable for?

Those who are interested in developing their sports skills, or their health and wellbeing.

What is the time commitment?

You can study this in one of your enrichments per week. The session will last for 30 mins. You will need your PE kit for each lesson.

Further information:

For further information, please speak to Mr Coates or Mr Taberner





What is this enrichment about?

Dance enrichment is an opportunity for you to learn teacher led choreography in a variety of dance styles. You will develop your creativity through choreographic group tasks including, developing your own warm ups to lead to the class, creating your own choreography and expanding on pre-existing dance routines. Dance styles include contemporary, hip hop, jazz and musical theatre. Throughout this enrichment, you will also develop your technique through various technical exercises that will allow you to progress further as a dancer.

How will this enrich my learning?

You will develop a variety of transferable skills that will not only support your progress in dance but also across the whole curriculum. For example, your confidence will improve through group work and performances to support you with the ability to share creative work with peers. You will have the opportunity to explore creatively and develop different ways to

express yourself, which will allow you to deal with challenging situations.

What will I develop as a result of this enrichment?

- Improve dance technique
- General physical fitness
- Performance skills
- Creativity

Who is the enrichment suitable for?

KS4 students

What is the time commitment?

You can study this in one of your enrichments per week, with the ability to opt for it one term at a time.

Further information:

For further information, please speak to Miss Riley





What is this enrichment about?

Pilates involves precise moves and specific breathing techniques. Pilates' main focus is on the core of the body, however you can expect to see strength gains in your arms and legs. In fact, if you practice Pilates regularly you'll notice tighter stomach muscles, a straighter back and more defined muscle tone. As Pilates positions put an emphasis on the core area, this is perhaps the health benefit you'll notice first.

How will this enrich my learning?

Doing Pilates regularly will help you sleep better at night. While performing Pilates, you will learn breathing techniques as well as train your mind, by doing this it will help you focus on completing tasks at school as well as at home.

What will I develop as a result of this enrichment?

Over time, as your muscles develop with Pilates, you will be stronger and your standing acceleration will increase. Top sports stars like Wales and former Real Madrid forward Gareth Bale incorporate Pilates into their rigorous exercise regime. If one of the best footballers in the world does it, it must be worth giving it a go!

Who is the enrichment suitable for?

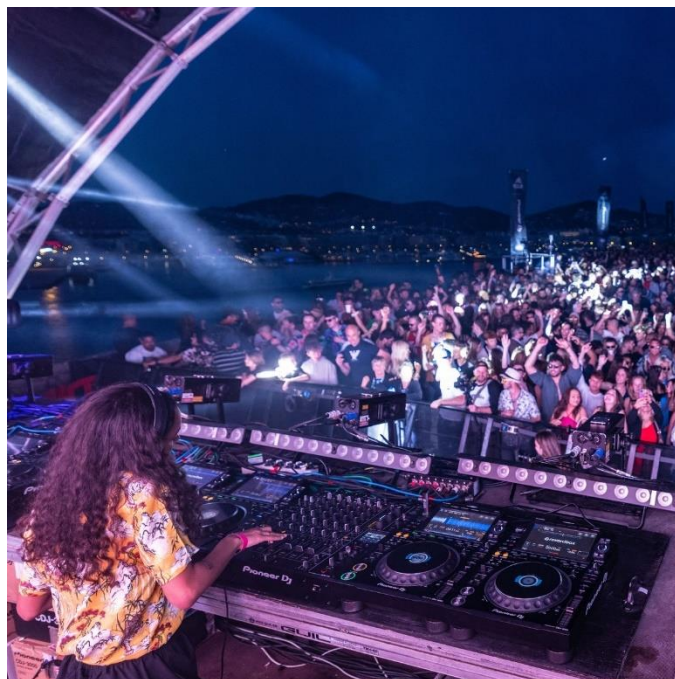
KS4 students.

What is the time commitment?

You can study this in one of your enrichments per week, with the ability to opt for it one term at a time. Be aware the limit is 15 students per class and you will need suitable clothing e.g. the school PE kit.

Further information:

For further information, please speak to Miss McAndrew.



What will I develop as a result of this enrichment?

You will develop a love for music from different years as well the technique of successfully mixing music through IT and the schools mixers.

Who is the enrichment suitable for?

KS4 students who love music and are creative.

What is the time commitment?

You can study this in one of your enrichments per week, with the ability to opt for it one term at a time.

What is this enrichment about?

This enrichment activity will give you the opportunity to develop the skills needed to become a DJ! Over the course of a term you will:

- Decide what genre (s) of music you'll play
- Listen/watch your favourite DJs in action
- Understand how to use the mixing software *Serato*
- Train and practice using the schools mixing desks and music from *Serato*.

How will this enrich my learning?

You will develop initiative in trying and mixing new sounds from different genres of music to hear what works as well as being reflective on what works and doesn't work.

Further information:

For further information, please speak to Mr Gould





yourself, which will allow you to deal with challenging situations.

What will I develop as a result of this enrichment?

- Improve drama technique
- Performance skills
- Creativity
- Confidence

What is this enrichment about?

Drama enrichment gives you the opportunity to explore your creativity through devising to a stimulus. You will also develop basic drama skills such as vocal and physical skill which will allow you to create higher quality performances. Alongside this we will explore techniques such as mime and physical theatre to add extra elements to your performances, which will further support your curriculum experience.

How will this enrich my learning?

You will develop a variety of transferable skills that will not only support your progress in drama but also across the whole curriculum. For example, your confidence will improve through group work and performances to support you with the ability to share creative work with peers. You will have the opportunity to explore creatively and develop different ways to express

Who is the enrichment suitable for?

KS4 students

What is the time commitment?

You can study this in one of your enrichments per week, with the ability to opt for it one term at a time.

Further information:

For further information, please speak to Miss Hewson.



What is this enrichment about?

Film Critics is your opportunity to explore how films build anticipation, fear and excitement in their audiences. You'll watch key moments from classic films such as 'Jaws' and 'Jurassic Park' and work out how the director has been so successful. You'll consider atmosphere, camera perspective, angles and how it has been cut to work together. If you chose this activity, you will watch a wide variety of film from different genres, times and cultures, including short film and animation. You'll work together to critique, review and express your opinions.

How will this enrich my learning?

This will enable you to understand how ideas are built and combined to create bigger concepts. You'll learn more about the choices a director makes and how they structure their creations for impact. You'll be evaluating but also understand key moments in stories. You'll be building your understanding of genre and getting to grips with how texts work.

What will I develop as a result of this enrichment?

You'll have lots of opportunities to share ideas and this will help build your confidence. You'll have the chance to work with new people and deepen your own thoughts through collaboration. You'll have fun with the Special Effects from the 1970s and as a consequence of being an insightful reader of film, be more aware of the writer's choices when you're reading different types of texts.

Who is the enrichment suitable for?

This option is available at KS4.

What is the time commitment?

You can study this in one of your enrichments per week, with the ability to opt for it one term at a time.

Further information:

For further information, please speak to Mrs Byrne, Mr Storey or your English teacher.



What is this enrichment about?

This enrichment activity will involve you developing your architectural skills as you design a home for the future. You will need to consider the materials you would use to build your home, as well as how to ensure it is energy efficient and environmentally friendly. Once you have designed your home you will then have the opportunity to make a scale model of it out of wood.

How will this enrich my learning?

This will enable you to apply the school's qualities in demonstrating initiative when designing your building but fulfilling the brief at the same time. You will then develop teamwork when it is time to turn your design into a real-life model.

What will I develop as a result of this enrichment?

You will develop IT skills in drawing your design as well as working to scale. You will develop your knowledge on materials used in the building trade as well as how to make homes damp proof and energy efficient. Alongside this you will develop skills in cutting, sanding and painting wood as you make the model of your design.

Who is the enrichment suitable for?

KS4 students.

What is the time commitment?

You can study this in one of your enrichments per week, with the ability to opt for it one term at a time.

Further information:

For further information, please speak to Mr Longfellow.



What is this enrichment about?

Music enrichment will give you the opportunity to explore a variety of instruments and music genres. You will learn basic skills on different instruments such as keyboard, ukulele, and drums, as well as developing ensemble skills when playing music with your peers. You will explore, through listening to and playing, a variety of genres of music to broaden your musical understanding. You will also take a part in different activities that will improve your performance and composition skills.

How will this enrich my learning?

You will develop a variety of transferable skills that will not only support your progress in music but also across the whole curriculum. For example, your confidence will improve through group work and performances to support you with the ability to share creative work with peers. You will have the opportunity to explore

creatively and develop different ways to express yourself, which will allow you to deal with challenging situations.

What will I develop as a result of this enrichment?

- Improve instrumental technique
- Performance skills
- Creativity
- Ensemble skills
- Broader understanding of different genres of music.

Who is the enrichment suitable for?

KS4 students

What is the time commitment?

You can study this in one of your enrichments per week, with the ability to opt for it one term at a time.

Further information:

For further information, please speak to Mrs Johnson.



What will I develop as a result of this enrichment?

- You will develop your ability to observe and record visually through drawing.
- Hone your ability to analyse an object and transfer that observation onto paper.
- Practice with different art materials.

Who is the enrichment suitable for?

KS 4 students

What is this enrichment about?

What is still life drawing? Still life drawings are drawings of non-living objects, arranged in a specific way, to create meaning or a visual effect. Common still life objects include things like flowers, fruits, vegetables, other food and beverages.

This enrichment activity will develop your drawing and observational skills, providing you with an understanding of shape, form and shading using a range of drawing materials.

How will this enrich my learning?

This enrichment activity will enable you to find confidence when drawing and using materials such as pencil, crayons, felt tips, charcoal & pastels. Drawing is a key part of GCSE Art and will enhance your GCSE coursework.

What is the time commitment?

You will study this for the full year in Period 6 enrichment slots.



What is this enrichment about?

This enrichment activity is about you researching designers and new artists who make links to cultures through pattern and colour to inspire you personally and your learning.

You will develop new skills such as photoshop and intertwine this with embroidery skills, to create your own patterns using needlework, incorporating clash colours to make your work unique!

How will this enrich my learning?

You will seek challenge in researching a designer/new artist and adapt their style to influence your designs. You will also develop your critical thinking when it is time for you to create your final design in embroidery, as well as problem solving in overcoming any issues you have in trying to make your design a reality.

What will I develop as a result of this enrichment?

You will learn how to use programmes such as photoshop in designing your project. You will need

to work to strict deadlines, from the initial design stage through to the final product, ensuring you fulfil the brief you were given.

The learning attributes you would develop through this club include Thoughtful and Self evaluative.

Who is the enrichment suitable for?

All KS4 students.

What is the time commitment?

You can study this in one of your enrichments per week, with the ability to opt for it one term at a time.

Further information:

For further information, please speak to Mrs Harris or Miss Carter.



What is this enrichment about?

Do it4 Youth is a 4-week sponsored challenge. Its split into four Duke of Edinburgh inspired parts – physical, technical, willpower and community. If you chose this activity you will research challenges to complete under the headings Get up, Skill up, Free up and Hand up. You can complete these challenges individually or as a team. Before you start your challenges, you will need to spread the word and start fundraising. Share your challenges far and wide and ask people to support you through sponsorship – how much will you be able to raise?

Examples of challenges you could come up with include:

Physical – Run 5km, cycle 10 km, swim 50 lengths

Technical – Learn a new skill e.g. to play a musical instrument, cook a new recipe.

Willpower – Go plastic free, social media free, chocolate free.

Community – Food bank, litter picking, washing cars

How will this enrich my learning?

This will enable you to apply the schools qualities in demonstrating initiative in creating tasks under each of the 4 headings. You will then demonstrate resilience when completing the tasks under a set time period.

What will I develop as a result of this enrichment?

Your work will enable a charitable donation to be made by successfully completing the challenges across the 4 areas:

- Physical
- Technical
- Willpower
- Community

Who is the enrichment suitable for?

KS3 students.

What is the time commitment?

You can study this in one of your enrichments per week, with the ability to opt for it one term at a time.

Further information:

For further information, please speak to Mr Duba, Miss Mayfield or Mr Sutton.



What is this enrichment about?

This enrichment activity is about you creating and running a small business with the aim to raise money for a local charity. You will work in a group to form your business plan and then you will need to do everything from working within a budget and managing your overheads to advertising and running the event itself.

How will this enrich my learning?

This will support your learning through communication and group work. In order for your business to be a success you need to learn how to work well in a team, reflect on what is working and what needs adapting unless you run the risk of being fired!

What will I develop as a result of this enrichment?

You will learn how to work under deadlines as you go from forming an initial idea, implementing a plan for your business and then setting up and running the business, previous examples have included running a Christmas movie night and selling tickets to a VIP area as

well as planning which food and drinks to sell and what to charge in order to cover your costs as well as making profit for your selected charity.

Who is the enrichment suitable for?

KS4 students.

What is the time commitment?

You can study this in one of your enrichments per week, with the ability to opt for it one term at a time.

Further information:

For further information, please speak to Mr Scott.



What is this enrichment about?

This enrichment activity involves following a St John's Ambulance first aid course delivered by a member of staff who is first aid qualified. You will cover important areas such as how to deal with situations that involve; bleeding and shock, chest pain, choking as well as bone, muscle and joint injuries. You will also learn how to perform CPR as well as Automated External Defibrillation.

How will this enrich my learning?

Hopefully you are never in a situation in where you are required to use these very important life skills, but if needed, you would be ready to potentially help someone when they need it most.

What will I develop as a result of this enrichment?

The skills needed which could potentially save a person's life whilst waiting for the emergency services to arrive.

Who is the enrichment suitable for?

KS4 students.

What is the time commitment?

This course would take one term to complete.





What is this enrichment about?

The Language Immersion Challenge is designed to help you keep practising your target language outside of lessons. You will receive a booklet containing 14 activities for you to complete, ranging from sending an email, watching a film or reading a teenager's blog in the target language to name just a few. If you choose this activity, you will be awarded Gold, Silver, or Bronze certificates depending on how many of the challenges you have completed. There are also an optional 5 advanced challenges, and if you complete all of these as well as the first 14 challenges, you will be awarded a Platinum certificate.

Your work will enable you to achieve a recognised certificate by the initiative "Routes Into Languages", recognised by universities and schools across Yorkshire and the UK.

How will this enrich my learning?

This will enable you to really immerse yourself in the language you are learning and be exposed to real-life use of the language. You will come across resources online and offline used by teenagers from the language-speaking country you are studying, and therefore discover a completely new aspect of learning a language and its culture! By doing so, you will demonstrate resilience when completing challenges in a foreign language.

What will I develop as a result of this enrichment?

- Reading and listening skills
- Cultural awareness
- Communication skills
- Increased curiosity about the world around you

Who is the enrichment suitable for?

KS4 students.

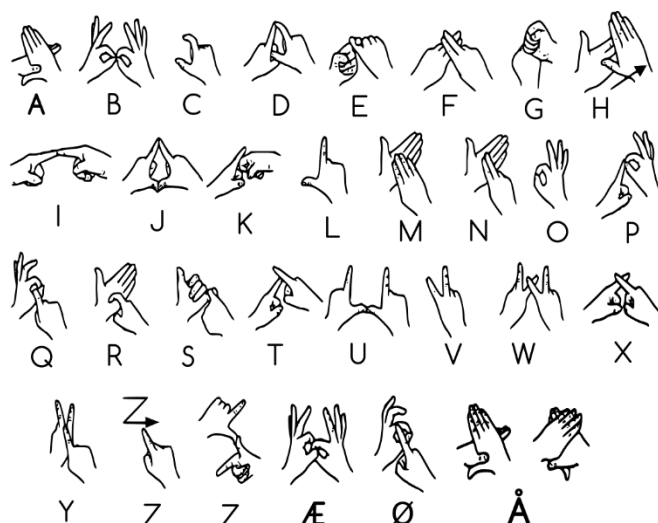
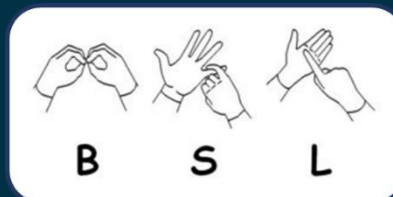
What is the time commitment?

You can study this as one of your enrichments per week, and depending on the challenges, an additional extra 5 mins per day, or the time of watching a film. You will have the ability to opt for it one term at a time.

Further information:

For further information, please speak to Mrs Greenfield, Miss Petiteville or Miss Garnier.

British Sign Language Club
Subject: Mathematics
Category: My Community



What is this enrichment about?

Ever wanted to learn another language?

What about a silent language?

Did you know that 1 in 6 of the UK adult population is affected by hearing loss?

900,000 people in the UK are profoundly deaf.

Perhaps you know someone who suffers from hearing loss, perhaps a family member? Wouldn't it be brilliant if you could communicate with them?

Come and join us and learn how to sign!

We will be starting with the basics and go from there. You never know, you may be a natural and this may well become your second language!

How will this enrich my learning?

Learning any new language supports your knowledge growth and ultimately makes you more employable in the future. You will be able to communicate with loved ones who have lost their hearing or people you work with in the future.

Communication is how we all get along and would it not be a better world if everyone has the ability to be *heard*.

What will I develop as a result of this enrichment?

You will develop your understanding of the British Sign Language alphabet and key words so that you can have a full silent conversation.

The school learning attributes you would develop through this club include Good communicator and Motivation.

Who is the enrichment suitable for?

All KS4 students.

What is the time commitment?

You can study this in one of your enrichments per week, with the ability to opt for it one term at a time.

Further information:

For further information, please speak to Mrs Bird.





What is this enrichment about?

This enrichment activity is about teaching you how to cook dishes from various cultures from around the world, how to cook on a budget as well as how to cook meals which support a healthy lifestyle.

How will this enrich my learning?

Do you know the various nutritional value of various foods? Which foods are full of carbohydrates, natural sugar or protein?

What will I develop as a result of this enrichment?

You will learn how to cook meals that meet the main food groups for example which foods are full of carbohydrates, natural sugar or protein?

How can you cook meals on a budget and what is good hygiene to ensure you don't poison your self or others?

- Physical
- Technical
- Willpower
- Community

Who is the enrichment suitable for?

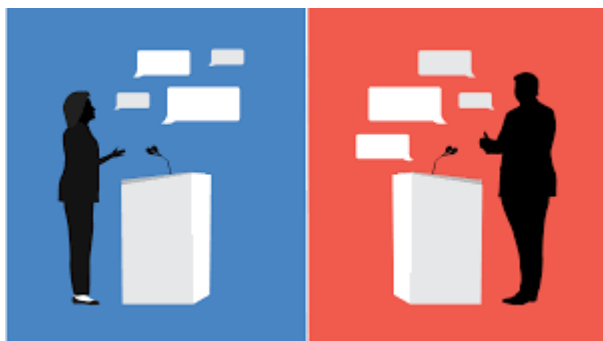
KS4 students.

What is the time commitment?

You can study this in one of your enrichments per week, with the ability to opt for it one term at a time. Be aware there will be a small cost for ingredients.

Further information:

For further information, please speak to Miss Carter.



How will this enrich my learning?

This will support your learning through communication and group work. You will need to be reflective and demonstrate initiative on your feet as you listen to the viewpoints that differ from yours so that you are able to articulate a suitable counter argument in a timely manner.

What is this enrichment about?

Debates provide you with a platform to share your views and to try and convince other people to agree and share your point of view. They are often used prior to elections where potential candidates try to persuade people to vote for them. As part of this enrichment activity you will be given a question to debate such as:

Explain the role and possible bias of the media in shaping the public image of climate change

Explain how globalisation creates the issue of food miles.

'The impacts of earthquake activity vary with levels of economic development.' How far do you agree with this statement?

You will then work in teams to research and create an argument before going head to head with a group of students or staff that have an opposing view – it's up to you to be convincing and win over as many people as you can!

What will I develop as a result of this enrichment?

By taking part in the Debate club you will become more persuasive speakers, critical listeners, analytical thinkers and engaged citizens. This will support you in school in extended writing tasks as well as outside of school in being more articulate as well as being aware of events that affect us all.

Who is the enrichment suitable for?

KS4 students.

What is the time commitment?

You can study this in one of your enrichments per week, with the ability to opt for it one term at a time.

Further information:

For further information, please speak to someone in the Geography department.



What is this enrichment about?

The world of grown-ups!

One day (soon...) you will all be responsible for your own finances, your own future.

We want to help you by supporting your understanding of what you will be tackling from balancing your current account; putting money aside for a fun filled holiday; paying your energy bills; and putting food on the table.

Basically, we want you all to have the best possible life and we want to provide you with the knowledge on how to do this in relation to balancing your finances.

How will this enrich my learning?

You will learn how to budget.

You will learn how to save.

You will learn how to shop...sensibly.

Understanding what bank accounts are the best to move forwards with.

What is a mortgage? How does the Bank of England decide on how much money I can borrow and what house I can buy?

It costs how much to run a car?!?

What will I develop as a result of this enrichment?

You will develop your understanding and appreciation of money and how you can make your wage go further.

Who is the enrichment suitable for?

KS3 students.

What is the time commitment?

You can study this in one of your enrichments per week, with the ability to opt for it one term at a time.

Further information:

For further information, please speak to Miss Cameron, Miss Rogers or Miss Newman.





What is this enrichment about?

STEM building challenge is about developing skills which are used in STEM careers to allow you to improve your problem solving and team work skills. If you chose this activity you will be given a task and a tray of equipment which can be used to complete your task, you will then have a research session to develop ideas, a trial session to refine your ideas and then a sharing session to identify the winning team and reflect on your creation.

Examples of activities include:

- How to suspend a 1kg mass 10 cm above the ground
- To make a floating vessel which can hold the largest mass
- To construct a vehicle which can travel the furthest
- To construct a vehicle which can travel the fastest.

How will this enrich my learning?

This will enable you to apply the schools qualities in demonstrating initiative in creating solutions for each task. You will then demonstrate resilience and reflection when reviewing and completing the tasks under a set time period. The tasks will also build on your scientific knowledge gained in lessons by applying this to different situations.

What will I develop as a result of this enrichment?

You will develop your teamwork and communication skills as tasks will be completed in groups

Who is the enrichment suitable for?

KS4 students.

What is the time commitment?

You can study this in one of your enrichments per week, with the ability to opt for it one term at a time.

Further information:

For further information, please speak to Mrs Jellett



Who is the enrichment suitable for?

KS4 students who love reading.

What is the time commitment?

You can study this in one of your enrichments per week, with the ability to opt for it one term at a time.

What is this enrichment about?

Join the reading group for a term and be part of a group of students who read and talk about their favorite books. What did you enjoy the most about the story, which character would you most like to meet from the book and which villain would you least like to meet and why? How did the author help set the scene and create tension and suspense?

How will this enrich my learning?

This will enable you to apply the school's qualities as you reflect on the books that you read. You will learn tolerance as you listen to other people's views and opinions.

What will I develop as a result of this enrichment?

You will develop a love for books as well as develop the skills in analysing what you enjoyed the most and the least from each book.

Further information:

For further information, please speak to Mrs Cartwright





What is this enrichment about?

England has a well established chess club scene with more than 600 over the board clubs across all parts of the nation, many of them with junior and online clubs in addition to face-to-face club nights and competitions. We want to add to this!

We're not just looking to train up the next Nino Batsiashvili or Felix Blohberger, we're also wanting people to want to learn the game; people who already enjoy the game and just want to play; and people who want to improve their knowledge and skills.

How will this enrich my learning?

Learning any new game helps improve your mind, chess in particular helps your thinking and problem-solving skills and supports building your self-confidence.

Every day and in every lesson, you face problem solving challenges, wouldn't life be that little bit better if you had the improved skills to tackle these problems a little faster and a little better?

What will I develop as a result of this enrichment?

You will develop your understanding of the game and how to play not just the game, but also your opponent.

Who is the enrichment suitable for?

KS4 students.

What is the time commitment?

You can study this in one of your enrichments per week, with the ability to opt for it one term at a time.

Further information:

For further information, please speak to anyone in the Maths faculty.



What is this enrichment about?

You will learn and play the games Ligretto, SET and Dobble.

Ligretto is a game of speed and agility. Get rid of the cards in your Ligretto Stack before your opponents by quickly placing cards of the same colour in numerical order on the piles in the centre of the table!

SET is a board game where any table becomes the board. It is a highly addictive, original game of visual perception. The goal is to be the first to see a SET from the 12 cards laid face up on the table.

Dobble is a speedy observation game where players race to match the identical symbol between cards. Reliant on a sharp eye and quick reflexes, Dobble creates excitement for while keeping every player involved in the action.

How will this enrich my learning?

Learning new skills has been shown to make more connections in the parts of your brain that are involved in muscle control and sensory perception, in a similar way to how your muscles get stronger from exercising regularly.

What will I develop as a result of this enrichment?

You will develop your observation, decision making, cooperation, planning and pattern spotting. You will learn to communicate effectively, improve your patience whilst having lots of fun! Card games are good for your brain because they improve your coordination, memory and sequencing.

Who is the enrichment suitable for?

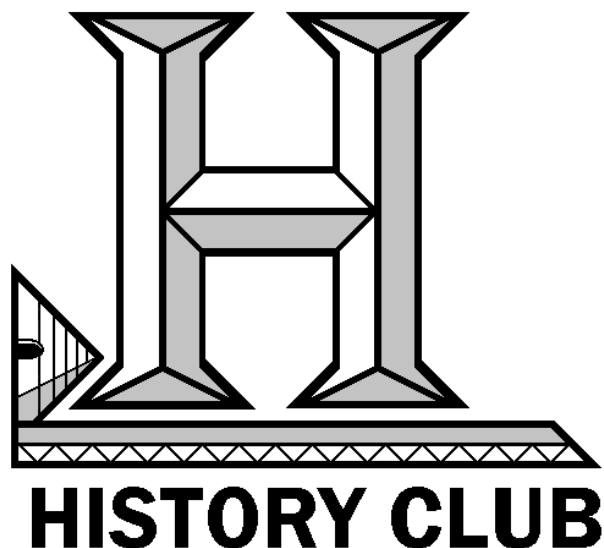
KS4 students.

What is the time commitment?

You can study this in one of your enrichments per week, with the ability to opt for it one term at a time.

Further information:

For further information, please speak to Mr Parkes and Ms Phelps.



What is this enrichment about?

History Club will allow you to explore different communities, ways of life and cultures which you may not have already have learnt about in lesson. If you chose this activity you will be able to independently research and create resources on a topic which you find interesting in the past. Before you start independently researching your own topic, you will learn about some mysteries and conspiracy theories from the past such as:

- Is there a city of Atlantis?
- Was there a real King Arthur?
- What happened to the Princes in the Tower?
- The Gunpowder Plot of 1605 – Was Guy Fawkes really to blame?
- Why was the enigma code hard to break?
- Who killed JFK?
- Would NASA really fake a moon landing?
- What really happened before 9/11?

How will this enrich my learning?

This will enable you to apply the school's qualities in demonstrating initiative and resilience in creating presentations which will be performed in the second half term. You will demonstrate that you seek challenge by being able to independently research parts of a topic of your choice.

What will I develop as a result of this enrichment?

Your work will enable you to understand more about the past and how historians find out about the past. This will enable you to ask questions of the past, and the skills in which to independently research and come to conclusions.

Who is the enrichment suitable for?

KS4 students.

What is the time commitment?

You can study this in one of your enrichments per week, with the ability to opt for it one term at a time.

Further information:

For further information, please speak to Mr Audsley, Miss England, Mr Cook or Miss Leach.