

Enrichment Options Booklet KS3 2022 Term 2

Contents page



My Body

Sports teams	Page 4
Fitness suite and racket sports	Page 5
Exploring Dance Choreography	Page 6
Pilates	Page 7

My Creativity

Textured Observational Drawing	Page 8
Creativity through Drama	Page 9
Film Critics	Page 10
Mosaic Workshop	Page 11
Audio Ghost Story	Page 12
Instrumental Workshop	Page 13
STEM Building Challenge	Page 14
Lego Challenge	Page 15
Textiles	Page 16

My Community

Do it 4 Youth	Page 17
Enterprise	Page 18
First Aid	Page 19
Italian Club	Page 20
British Sign Language Club	Page 21

My Future

Can cook will cook!	Page 22
Debate club	Page 23
Environmentalism	Page 24

My Mind

Book Club	Page 25
Chess Club	Page 26
Football Fantasy	Page 27
Games club	Page 28
Grand Designs	Page 29
History Club	Page 30
Magic of Science, Little and Large	Page 31

Enrichment



Our curriculum places great value on extra-curricular activities as a mechanism of enriching the taught curriculum, allowing students to deepen their understanding, see the applications of their studies, promote enjoyment and foster relationships, health, skills and broader interests. The purpose therefore of these enrichment activities is to provide our students opportunities to engage with life in modern Britain and make better informed decisions in adult life.

Temple Moor prides itself on offering a wide and varied suite of extra-curricular activities through the extensive number of clubs, sports teams and performances that our staff run after school, throughout the year, during the new period 6 which is 14:35 – 15:05 Monday to Thursday only (for two of these nights students will take part in their chosen enrichment activity and on the other nights students will take part in reading).

Students will opt for two extra-curricular clubs per term from the following categories which they will take part in on a Tuesday and a Thursday:

- **My Body** – activities across a range of sports, including teams which participate in local and regional competitions.
- **My Creativity** – clubs and activities that provide opportunities for students to develop their imagination and inventiveness
- **My Community** – activities linked to supporting and developing student's understanding of their role within the local community
- **My Future** – projects and challenges which broaden students' perspectives beyond Temple Moor.
- **My Mind** – clubs and activities linked to academic subjects.

Enrichment forms an important part of students' daily experience at Temple Moor and provides opportunities for students to develop their initiative, ambition by seeking challenges as well as reflection and collaboration with their peers. This will support students whilst at school as well as preparing them for life once they leave Temple Moor.

Students will make their options shortly during form time for Term Two, choosing a first choice and a reserve for both Tuesday and Thursday. If a student is unfortunate enough not to receive their first and second choice they will still have the option of choosing that enrichment activity the following term and will be spoken to directly by a member of staff to select an alternative activity.

What is this enrichment about?

This enrichment club allows you to train as part of a team in your chosen sport.

How will this enrich my learning?

This will give you additional time outside of your Core PE lessons to develop your skills as a team. The session will not just be games based but will be designed to improve your overall performance individually and collectively. This will hopefully then make your team more competitive in both external league and cup fixtures.

What will I develop as a result of this enrichment?

- Physical attributes
- Technical skills
- Tactics
- Teamwork
- Leadership

Who is the enrichment suitable for?

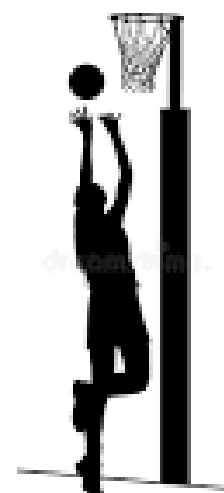
Students who would like to represent the school in football, rugby or netball.

What is the time commitment?

You can study this in one of your enrichments per week. The session will last for 1 hour (2:35-3:35). There is also the expectation that students will give up additional time to represent the school in both home and away fixtures.

Further information:

For further information, please speak to Mr Coates or Mr Taberner



What is this enrichment about?

This enrichment club allows you to train as part of a team in your chosen sport or develop your physical, social and emotional wellbeing each week. The three sports on offer this term will be Badminton, Fitness and Table Tennis.

How will this enrich my learning?

This will give you additional time outside of your Core PE lessons to develop your skills as an individual or partner. The session will not just be games based but will be designed to improve your overall performance individually and collectively.

What will I develop as a result of this enrichment?

- Physical attributes
- Technical skills
- Tactics
- Teamwork
- Leadership



Who is the enrichment suitable for?

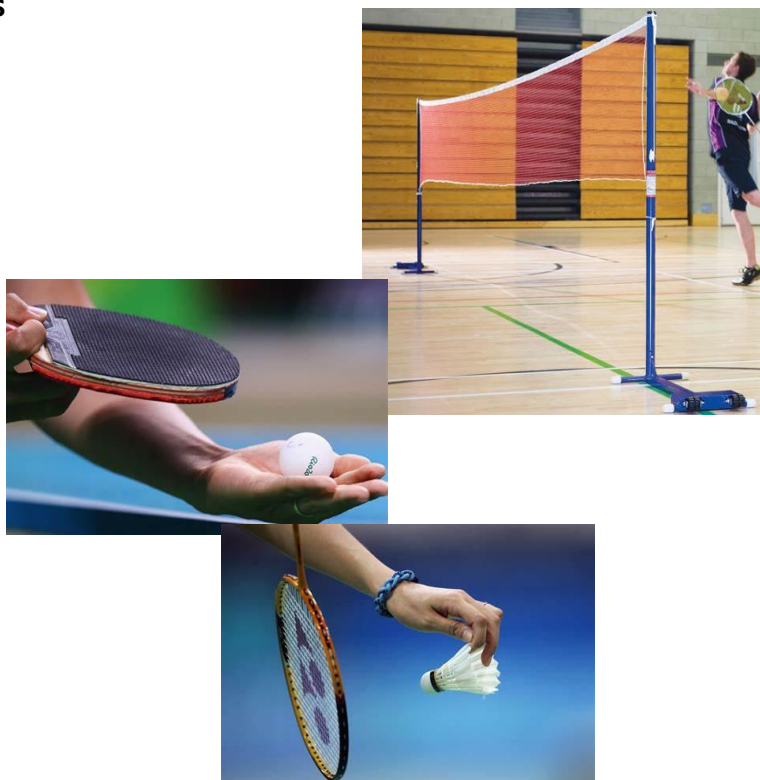
Those who are interested in developing their sports skills, or their health and wellbeing.

What is the time commitment?

You can study this in one of your enrichments per week. The session will last for 30 mins. You will need your PE kit for each lesson.

Further information:

For further information, please speak to Mr Coates or Mr Taberner





What is this enrichment about?

Dance enrichment is an opportunity for you to learn teacher led choreography in a variety of dance styles. You will develop your creativity through choreographic group tasks including, developing your own warm ups to lead to the class, creating your own choreography and expanding on pre-existing dance routines. Dance styles include contemporary, hip hop, jazz and musical theatre. Throughout this enrichment, you will also develop your technique through various technical exercises that will allow you to progress further as a dancer.

How will this enrich my learning?

You will develop a variety of transferable skills that will not only support your progress in dance but also across the whole curriculum. For example, your confidence will improve through group work and performances to support you with the ability to share creative work with peers. You will have the opportunity to explore creatively and develop different ways to express yourself, which will allow you to deal with challenging situations.

What will I develop as a result of this enrichment?

- Improve dance technique
- General physical fitness
- Performance skills
- Creativity
- Self evaluation
- Co-operative
- Good communicator

Who is the enrichment suitable for?

All KS3 students

What is the time commitment?

You can study this in one of your enrichments per week, with the ability to opt for it one term at a time.

Further information:

For further information, please speak to Miss Riley.



Pilates

Enrichment category: My Body



What is this enrichment about?

Pilates involves precise moves and specific breathing techniques. Pilates' main focus is on the core of the body, however you can expect to see strength gains in your arms and legs. In fact, if you practice Pilates regularly you'll notice tighter stomach muscles, a straighter back and more defined muscle tone. As Pilates positions put an emphasis on the core area, this is perhaps the health benefit you'll notice first.

How will this enrich my learning?

Doing Pilates regularly will help you sleep better at night. While performing Pilates, you will learn breathing techniques as well as train your mind. By doing this it will help you focus on completing tasks at school as well as at home.

What will I develop as a result of this enrichment?

Over time, as your muscles develop with Pilates, you will be stronger and your standing acceleration will increase. Top sports stars like Wales, and former Real Madrid forward, Gareth Bale incorporate

Pilates into their rigorous exercise regime. If one of the best footballers in the world does it, it must be worth giving it a go!

What will I develop as a result of this enrichment?

- Well being (physical and mental)

Who is the enrichment suitable for?

All KS3 students.

What is the time commitment?

You can study this in one of your enrichments per week, with the ability to opt for it one term at a time. Be aware the limit is 15 students per class and you will need suitable clothing e.g. the school PE kit. This class will run for an additional 10 minutes (until 3:15 to accommodate the time for students to get changed).

Further information:

For further information, please speak to Miss McAndrew.





What is this enrichment about?

This enrichment will enable you to create an observational drawing on a background you will make from a range of different coloured and textured papers. You will learn about layering a range of papers and how to draw from real life, providing you with an understanding of shape, form and shading.

How will this enrich my learning?

This enrichment will develop your observational drawing skills. This is essential for studying art at every level in school. You will also expand your ability to experiment with layering different paper types to compliment your drawings, creating interesting backgrounds.

What will I develop as a result of this enrichment?

- You will develop your ability to observe and record visually through drawing.
- The ability to select appropriate papers to create a collaged background which can be drawn onto.
- Thoughtfulness

Who is the enrichment suitable for?

This course is suited to students who want to develop their observational drawing skills and experiment with creating backgrounds.

What is the time commitment?

You will study this course for the duration of one term across Period 6 enrichment slots.

Further information:

For further information, please speak to Mr Cashion.



What is this enrichment about?

Drama enrichment gives you the opportunity to explore your creativity using a stimulus as the basis for devising performances. You will also develop basic drama skills such as vocal and physical skill which will allow you to create higher quality performances. Alongside this we will explore techniques such as mime and physical theatre to add extra elements to your performances, which will further support your curriculum experience.

How will this enrich my learning?

You will develop a variety of transferable skills that will not only support your progress in drama but also across the whole curriculum. For example, your confidence will improve through group work and performances to support you with the ability to share creative work with peers. You will have the opportunity to explore creatively and develop different ways to express yourself, which will allow you to deal with challenging situations.

What will I develop as a result of this enrichment?

- Improve drama technique
- Performance skills
- Creativity
- Confidence
- Good communicator
- Reflective
- Motivated

Who is the enrichment suitable for?

KS3 students

What is the time commitment?

You can study this in one of your enrichments per week, with the ability to opt for it one term at a time.

Further information:

For further information, please speak to Miss Hewson.





What is this enrichment about?

Film Critics is your opportunity to explore how films build anticipation, fear and excitement in their audiences. You'll watch key moments from classic films such as 'Jaws' and 'Jurassic Park' and work out how the director has been so successful. You'll consider atmosphere, camera perspective, angles and how it has been cut to work together. If you chose this activity, you will watch a wide variety of film from different genres, times and cultures, including short film and animation. You'll work together to critique, review and express your opinions.

How will this enrich my learning?

This will enable you to understand how ideas are built and combined to create bigger concepts. You'll learn more about the choices a director makes and how they structure their creations for impact. You'll be evaluating but also understand key moments in stories. You'll be building your understanding of genre and getting to grips with how texts work.

What will I develop as a result of this enrichment?

You'll have lots of opportunities to share ideas and this will help build your confidence. You'll have the chance to work with new people and deepen your own thoughts through collaboration. You'll have fun with the Special Effects from the 1970s and as a consequence of being an insightful reader of film, be more aware of the writer's choices when you're reading different types of texts.

The learning attributes you will develop include:

- Evaluation
- Communication
- Co-operative
- Inquisitive

Who is the enrichment suitable for?

This option is available at KS3.

What is the time commitment?

You can study this in one of your enrichments per week, with the ability to opt for it one term at a time.

Further information:

For further information, please speak to Mrs Byrne, Mr Storey or your English teacher.



What is this enrichment about?

You will create a mosaic inspired by nature. A mosaic is a picture or pattern produced by arranging together small pieces of a material such as stone or paper. This will involve careful colour selection and attention to detail to combine small areas of colour.

How will this enrich my learning?

You will be able to develop skills in choosing colours which work well together as well as understanding the difference between hues and shades. In addition to this, you will learn how to collage small pieces of paper carefully to build a colourful piece of artwork.

What will I develop as a result of this enrichment?

- The ability to select appropriate samples of paper to create a mosaic effect.
- Basic understanding of colour theory.
- Good Communicator
- Thoughtfulness

Who is the enrichment suitable for?

This course is suited to students who want to experiment with a new technique to create a colourful piece of artwork.

What is the time commitment?

You will study this course for the duration of one term across Period 6 enrichment slots.

Further information

Please speak to a member of the Art department.



What is this enrichment about?

In recent years, audio books have become more and more popular. The books are often read by famous actors or other celebrities.

Audio books are just the normal text of a book being read. However, there are also audio plays that add to the story with different voices, music, and sound effects. This produces a product that is much more engaging and entertaining.

In this session you will select a ghost or other scary story and use a range of technology to create the different audio elements needed to create a short audio play. You will then use industry standard software to combine these elements into a finished audio play.

The best finished plays will be made available online for other students to listen to and be frightened.

How will this enrich my learning?

You will have the opportunity to develop and demonstrate qualities such as resilience when using unfamiliar software and ambition to create a product that is entertaining and uses new skills effectively.

What will I develop as a result of this enrichment?

You will develop creative and technical skills that build on skills that you have already gained in subjects such as English, Performance and ICT.

The learning attributes that you will develop include:

- Good communicator
- Motivated
- Thoughtfulness

Who is the enrichment suitable for?

KS3 students with creative and dramatic flair.

What is the time commitment?

You can study this in one of your enrichments per week, with the ability to opt for it one term at a time.

Further information:

For further information, please speak to Mr Bryant.



What is this enrichment about?

Music enrichment will give you the opportunity to explore a variety of instruments and music genres. You will learn basic skills on different instruments such as keyboard, ukulele, and drums, as well as developing ensemble skills when playing music with your peers. You will explore, through listening to and playing, a variety of genres of music to broaden your musical understanding. You will also take a part in different activities that will improve your performance and composition skills.

How will this enrich my learning?

You will develop a variety of transferable skills that will not only support your progress in music but also across the whole curriculum. For example, your confidence will improve through group work and performances to support you with the ability to share creative work with peers. You will have the opportunity to explore creatively and develop different ways to express yourself, which will allow you to deal with challenging situations.

What will I develop as a result of this enrichment?

- Improve instrumental technique
- Performance skills
- Creativity
- Ensemble skills
- Broader understanding of different genres of music.
- Good communicator
- Co-operative

Who is the enrichment suitable for?

KS3 students

What is the time commitment?

You can study this in one of your enrichments per week, with the ability to opt for it one term at a time.

Further information:

For further information, please speak to Mrs Johnson.



What is this enrichment about?

STEM (Science, Technology, Engineering and Mathematics) building challenge is about developing skills which are used in STEM careers to allow you to improve your problem solving and team work skills. If you chose this activity you will be given a task and a tray of equipment which can be used to complete your task. You will then have a research session to develop ideas, a trial session to refine your ideas and then a sharing session to identify the winning team and reflect on your creation.

Examples of activities include:

- How to suspend a 1kg mass 10 cm above the ground
- To make a floating vessel which can hold the largest mass
- To construct a vehicle which can travel the furthest
- To construct a vehicle which can travel the fastest.

How will this enrich my learning?

This will enable you to apply the school qualities in demonstrating initiative in creating solutions for

each task. You will then demonstrate resilience and reflection when reviewing and completing the tasks under a set time period. The tasks will also build on your scientific knowledge gained in lessons by applying this to different situations.

What will I develop as a result of this enrichment?

You will develop your teamwork and communication skills as tasks will be completed in groups as well as the school attributes Thoughtfulness and Inquisitive.

Who is the enrichment suitable for?

All KS3 students.

What is the time commitment?

You can study this in one of your enrichments per week, with the ability to opt for it one term at a time.

Further information:

For further information, please speak to Mrs Jellett.



What is this enrichment about?

You will embark on the LEGO® Learning System. This is a series of solutions that work seamlessly together to deliver engaging, hands-on STEAM (Science, Technology, Engineering, Arts and Mathematics) learning experiences for students of all ages. It combines standards-aligned curriculum units, stackable LEGO bricks, a simple coding progression, intelligent hardware, and professional development, creating limitless possibilities for playful STEAM learning.

Bricks: Build, tinker and experiment with a system of LEGO® elements.

Programming: Learn and apply coding principles in a STEAM context.

Intelligent Hardware: Expand learning opportunities with a system of LEGO® hardware elements that are easy to build.

How will this enrich my learning?

You will become confident, life-long learner through unlimited possibilities for hands-on, playful STEAM learning.

What will I develop as a result of this enrichment?

STEAM programs are a highly motivating and engaging way for pupils to develop and demonstrate their science and technology skills. These programs help pupils learn the cooperation, collaboration, and teamwork skills they'll need to excel in a changing workforce as well as allow them to be inquisitive.

Who is the enrichment suitable for?

KS3 students.

What is the time commitment?

You can study this in one of your enrichments per week, with the ability to opt for it one term at a time.

Further information:

For further information, please speak to Mrs Murray or Mr Jurado.



What is this enrichment about?

This enrichment activity is about you researching designers and new artists who make links to cultures through pattern and colour to inspire you personally and your learning.

You will develop new skills such as photoshop and intertwine this with embroidery skills, to create your own patterns using needlework, incorporating clash colours to make your work unique!

How will this enrich my learning?

You will seek challenge in researching a designer/new artist and adapt their style to influence your designs. You will also develop your critical thinking when it is time for you to create your final design in embroidery, as well as problem solving in overcoming any issues you have in trying to make your design a reality.

What will I develop as a result of this enrichment?

You will learn how to use programmes such as photoshop in designing your project. You will need

to work to strict deadlines, from the initial design stage through to the final product, ensuring you fulfil the brief you were given.

The learning attributes you would develop through this club include Thoughtful and Self evaluative.

Who is the enrichment suitable for?

KS3 students.

What is the time commitment?

You can study this in one of your enrichments per week, with the ability to opt for it one term at a time.

Further information:

For further information, please speak to Mrs Harris or Miss Carter.



What is this enrichment about?

Do it4 Youth is a 4-week sponsored challenge. It is split into four Duke of Edinburgh inspired parts – physical, technical, willpower and community. If you chose this activity you will research challenges to complete under the headings Get up, Skill up, Free up and Hand up. You can complete these challenges individually or as a team. Before you start your challenges, you will need to spread the word and start fundraising. Share your challenges far and wide and ask people to support you through sponsorship – how much will you be able to raise?

Examples of challenges you could come up with include:

Physical – Run 5km, cycle 10 km, swim 50 lengths

Technical – Learn a new skill e.g. to play a musical instrument, cook a new recipe.

Willpower – Go plastic free, social media free, chocolate free.

Community – Food bank, litter picking, washing cars

How will this enrich my learning?

This will enable you to apply the schools qualities in demonstrating initiative in creating tasks under each of the 4 headings. You will then demonstrate resilience when completing the tasks under a set time period.

The school qualities you would develop through this club include Motivated, Thoughtfulness and Co-operative.

What will I develop as a result of this enrichment?

Your work will enable a charitable donation to be made by successfully completing the challenges across the 4 areas:

- Physical
- Technical
- Willpower
- Community

Who is the enrichment suitable for?

KS3 students.

What is the time commitment?

You can study this in one of your enrichments per week, with the ability to opt for it one term at a time.

Further information:

For further information, please speak to Mr Duba, Miss Mayfield or Mr Sutton.



What is this enrichment about?

This enrichment activity is about you creating and running a small business, with the aim to raise money for a local charity. You will work in a group to form your business plan and then you will need to do everything from working within a budget and managing your overheads to advertising and running the event itself.

How will this enrich my learning?

This will support your learning through communication and group work. In order for your business to be a success, you need to learn how to work well in a team, reflect on what is working and what needs adapting unless you run the risk of being fired!

What will I develop as a result of this enrichment?

You will learn how to work under deadlines as you go from forming an initial idea, implementing a plan for your business and then setting up and running the business, previous examples have included

running a Christmas movie night and selling tickets to a VIP area as well as planning which food and drinks to sell and what to charge in order to cover your costs as well as making profit for your selected charity.

The school learning attributes you would develop through this club include Thoughtfulness and Resilient.

Who is the enrichment suitable for?

All KS3 students.

What is the time commitment?

You can study this in one of your enrichments per week, with the ability to opt for it one term at a time.

Further information:

For further information, please speak to Mr Scott.



What is this enrichment about?

This enrichment activity involves following a St John's Ambulance first aid course, delivered by a member of staff who is first aid qualified. You will cover important areas such as how to deal with situations that involve; allergies, asthma, bleeding, choking, head injuries as well as basic life support. Learn how to perform CPR as well as Automated External Defibrillation.

How will this enrich my learning?

Hopefully you are never in a situation where you are required to use these very important life skills, but if needed, you would be ready to potentially help someone when they need it most.

What will I develop as a result of this enrichment?

The skills needed which could potentially save a person life whilst waiting for the emergency services to arrive.

The school learning attributes you would develop through this club include Co-operative and Thoughtfulness.

Who is the enrichment suitable for?

All KS3 students.

What is the time commitment?

This course would take one term to complete.





What is this enrichment about?

The Italian club is designed to enable you to learn a completely new language with a native teacher from Italy! You will learn Italian and then put these new skills into practice by communicating with students from schools in Italy through writing emails and maybe even zoom calls. By the end of the course, you will be able to introduce yourself giving your name, age and birthday, greet people, express how you feel, and also talk about food and drinks in Italian.

How will this enrich my learning?

This will enable you to enrich your cultural knowledge and your communication and social skills. You will develop your resilience when having to use a new language and your self-confidence when you realise you can speak a new language and communicate with native speakers. By learning a new language, you are acquiring transferable skills which will become useful in many other situations in life.

What will I develop as a result of this enrichment?

- Communication and social skills
- Awareness of phonics and sounds in Italian
- an awareness of Latin-based languages
- translation skills
- respect of other cultures and customs

The school learning attributes you would develop through this club include Inquisitive and Communication.

Who is the enrichment suitable for?

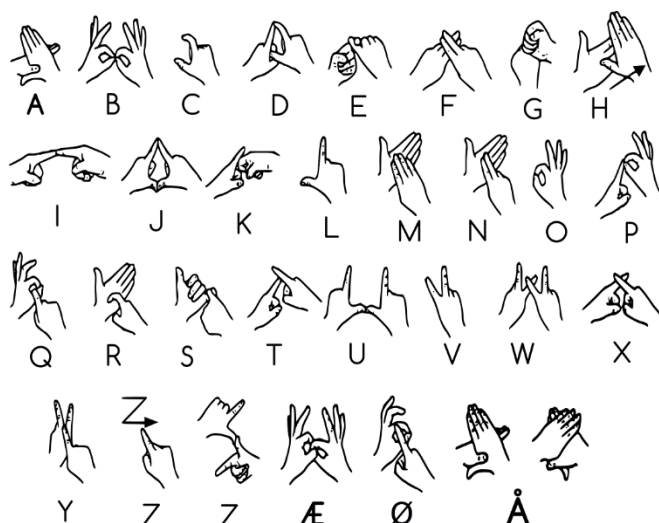
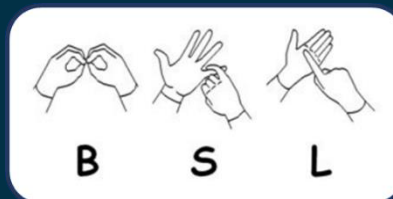
KS3 students.

What is the time commitment?

You can study this in one of your enrichments per week. You will have the ability to opt for it one term at a time.

Further information:

For further information, please speak to Mr Pianigiani or Mrs Greenfield.



What is this enrichment about?

Ever wanted to learn another language?

What about a silent language?

Did you know that 1 in 6 of the UK adult population is affected by hearing loss?

900,000 people in the UK are profoundly deaf.

Perhaps you know someone who suffers from hearing loss, perhaps a family member? Wouldn't it be brilliant if you could communicate with them?

Come and join us and learn how to sign!

We will be starting with the basics and go from there. You never know, you may be a natural and this may well become your second language!

How will this enrich my learning?

Learning any new language supports your knowledge growth and ultimately makes you more employable in the future. You will be able to communicate with loved ones who have lost

their hearing or people you work with in the future.

Communication is how we all get along and would it not be a better world if everyone has the ability to be *heard*.

What will I develop as a result of this enrichment?

You will develop your understanding of the British Sign Language alphabet and key words so that you can have a full silent conversation.

The school learning attributes you would develop through this club include Good communicator and Motivation.

Who is the enrichment suitable for?

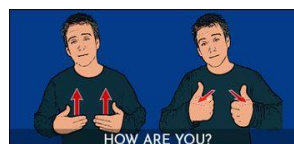
All KS3 students.

What is the time commitment?

You can study this in one of your enrichments per week, with the ability to opt for it one term at a time.

Further information:

For further information, please speak to Mrs Bird.





What is this enrichment about?

Do you know about the various nutritional value of various foods? Which foods are full of carbohydrates, natural sugar or protein? This enrichment activity is about teaching you how to cook more balanced, healthier meals, how to cook dishes from various cultures around the world as well as how to cook on a budget (something which is becoming increasingly important with rising food prices). You will also learn about food hygiene so that you are less likely to poison yourself or others.

How will this enrich my learning?

Cooking and eating more balanced meals will help support a healthier lifestyle. This means not only will you feel better about yourself, but your concentration levels will improve, and you will feel more energised! This will support you in both your learning in school as well as in the activities you take part in outside of school e.g. football, cadets and gymnastics. You will also learn about different cultures through

preparing, and of course eating, foods from different cultures around the world.

What will I develop as a result of this enrichment?

You will learn how to cook meals that meet the main food groups, so you are able to have a more balanced diet alongside a greater appreciation of cultures from around the world.

The school attributes you will develop through this enrichment activity include:

- Inquisitive – what foods go well together, and which don't?
- Thoughtfulness - What foods from around the world do you enjoy?
- Links Concepts – Using the main food groups plan and prepare healthy, balanced meals.

Who is the enrichment suitable for?

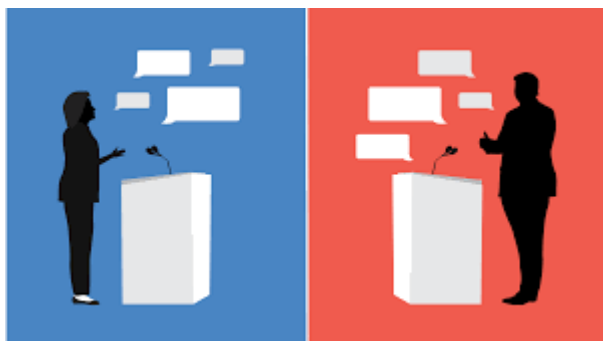
All KS3 students.

What is the time commitment?

You can study this in one of your enrichments per week, with the ability to opt for it one term at a time. Be aware there will be a small cost for ingredients.

Further information:

For further information, please speak to Miss Carter.



What is this enrichment about?

Debates provide you with a platform to share your views and to try and convince other people to agree and share your point of view. They are often used prior to elections where potential candidates try to persuade people to vote for them. As part of this enrichment activity you will be given a question to debate such as:

Everyone should become a vegetarian to help stop climate change

Cars should be banned from cities

We should only eat food that is grown in Britain

You will then work in teams to research and create an argument before going head to head with a group of students or staff that have an opposing view – it's up to you to be convincing and win over as many people as you can!

How will this enrich my learning?

This will support your learning through communication and group work. You will need to be reflective and demonstrate initiative on your feet as

you listen to the viewpoints that differ from yours so that you are able to articulate a suitable counter argument in a timely manner. You will also develop the school learning attributes Good communicator and Resilience.

What will I develop as a result of this enrichment?

By taking part in the Debate club you will become more persuasive speakers, critical listeners, analytical thinkers and engaged citizens. This will support you in school in extended writing tasks as well as outside of school in being more articulate as well as being aware of events that affect us all.

Who is the enrichment suitable for?

KS3 students.

What is the time commitment?

You can study this in one of your enrichments per week, with the ability to opt for it one term at a time.

Further information:

For further information, please speak to someone in the Geography department.



What is this enrichment about?

Environmentalism is a term long challenge, to identify and solve an environmental issue faced by school. Over the term you will identify an issue that is causing additional environmental impact at the school. Then working in teams you will devise a solution to this issue and produce a campaign to persuade people of your view

Examples of campaigns:

- Reducing plastic waste from break and lunch
- Reducing wasted paper resources
- Increasing renewable energy use around school
- Increasing availability of recycling bins around school

How will this enrich my learning?

This will enable you to apply the school's qualities in demonstrating initiative in creating a campaign. It will also enable you to apply your research and

debate, creative writing and mixed media skills. You will also learn about the causes and effects of climate change, and what everyone, from individuals to governments, can do to help reverse this.

What will I develop as a result of this enrichment?

You will work will to produce a campaign to make the school a more environmentally friendly place.

You will develop your debate skills and show initiative as well as creativity to produce a persuasive campaign. The school learning attributes you will develop through this include Thoughtfulness and Inquisitive.

Who is the enrichment suitable for?

KS3 students.

What is the time commitment?

You can study this in one of your enrichments per week, with the ability to opt for it one term at a time.

Further information:

For further information, please speak to Miss Livsey or Miss Bolger



What is this enrichment about?

Join the reading group for a term and be part of a group of students who read and talk about their favorite books. What did you enjoy the most about the story, which character would you most like to meet from the book and which villain would you least like to meet and why? How did the author help set the scene and create tension and suspense?

How will this enrich my learning?

This will enable you to apply the school's qualities as you reflect on the books that you read. You will learn tolerance as you listen to other people's views and opinions.

What will I develop as a result of this enrichment?

You will develop a love for books as well as develop the skills in analysing what you enjoyed the most and the least from each book. At the same time, you will develop the school attributes of Good communicator and Inquisitive.

Who is the enrichment suitable for?

KS3 students who love reading.

What is the time commitment?

You can study this in one of your enrichments per week, with the ability to opt for it one term at a time.

Further information:

For further information, please speak to Mrs Cartwright.





What is this enrichment about?

England has a well established chess club scene with more than 600 over the board clubs across all parts of the nation, many of them with junior and online clubs in addition to face-to-face club nights and competitions. We want to add to this!

We're not just looking to train up the next Nino Batsiashvili or Felix Blohberger, we're also wanting people to want to learn the game; people who already enjoy the game and just want to play; and people who want to improve their knowledge and skills.

How will this enrich my learning?

Learning any new game helps improve your mind, chess in particular helps your thinking and problem-solving skills and supports building your self-confidence as well as developing the school attributes Self evaluative and Thoughtfulness.

Every day and in every lesson, you face problem solving challenges, wouldn't life be that little bit better if you had the improved skills to tackle these problems a little faster and a little better?

What will I develop as a result of this enrichment?

You will develop your understanding of the game and how to play not just the game, but also your opponent.

Who is the enrichment suitable for?

All KS3 students.

What is the time commitment?

You can study this in one of your enrichments per week, with the ability to opt for it one term at a time.

Further information:

For further information, please speak to anyone in the Maths faculty.





What is this enrichment about?

Ever wanted to build your own football team?

Do this with us and:

- Create your team from current male and female Premier League players
- Create your (symmetrical) badge
- Create your scale drawings of your stadium
- Use your mathematical skills and the real-life statistics and transfer costs to decide on player selection and formation
- Update your totals and team selection every week!
- Be the best manager in your group!

How will this enrich my learning?

Whilst we don't need to tell you that Maths is fun and Maths is everywhere... you will improve your budgeting skills; improve your statistical understanding and ability to compare copious amounts of data to for a team of fifteen male and female players!

The competitive spirit is in all of us, let's combine this with the beautiful game played by billions across the globe breaking all language barriers.

What will I develop as a result of this enrichment?

You will develop your understanding and love of the game!

You will improve your creative skills and appreciation of the complexities of stadium design and player selection further supporting the school attributes self evaluative and thoughtfulness.

Who is the enrichment suitable for?

KS3 students.

What is the time commitment?

You can study this in one of your enrichments per week, with the ability to opt for it one term at a time.

Further information:

For further information, please speak to Mr Godrich.





What is this enrichment about?

You will learn and play the games Ligretto, SET and Dobble.

Ligretto is a game of speed and agility. Get rid of the cards in your Ligretto Stack before your opponents by quickly placing cards of the same colour in numerical order on the piles in the centre of the table!

SET is a board game where any table becomes the board. It is a highly addictive, original game of visual perception. The goal is to be the first to see a SET from the 12 cards laid face up on the table.

Dobble is a speedy observation game where players race to match the identical symbol between cards. Reliant on a sharp eye and quick reflexes, Dobble creates excitement for while keeping every player involved in the action.

How will this enrich my learning?

Learning new skills has been shown to make more connections in the parts of your brain that are involved in muscle control and sensory perception, in a similar way to how your muscles get stronger from exercising regularly.

What will I develop as a result of this enrichment?

You will develop your observation, decision making, cooperation, planning and pattern spotting. You will learn to become a good communicator improve your patience whilst having lots of fun! Card games are good for your brain because they improve your coordination, memory and sequencing.

Who is the enrichment suitable for?

KS3 students.

What is the time commitment?

You can study this in one of your enrichments per week, with the ability to opt for it one term at a time.

Further information:

For further information, please speak to Mr Parkes and Ms Phelps.



What is this enrichment about?

This enrichment activity will involve you developing your architectural skills as you design a home for the future. You will need to consider the materials you would use to build your home, as well as how to ensure it is energy efficient and environmentally friendly. Once you have designed your home you will then have the opportunity to make a scale model of it.

How will this enrich my learning?

This will enable you to apply the school's qualities in demonstrating initiative when designing your building but fulfilling the brief at the same time. You will then develop teamwork when it is time to turn your design into a real-life model.

What will I develop as a result of this enrichment?

You will develop IT skills in drawing your design as well as working to scale. You will develop your knowledge on materials used in the building trade as well as how to make homes damp proof and energy efficient. Through this you will develop the school attributes including thoughtfulness and self evaluative.

Who is the enrichment suitable for?

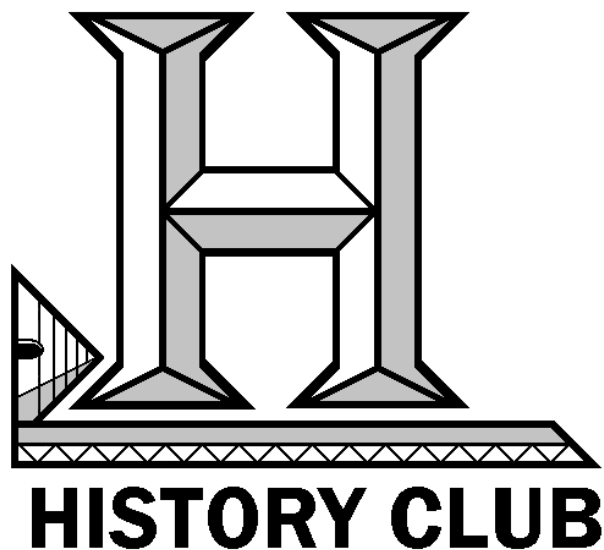
KS3 students.

What is the time commitment?

You can study this in one of your enrichments per week, with the ability to opt for it one term at a time.

Further information:

For further information, please speak to Mr Longfellow.



What is this enrichment about?

History Club will allow you to explore different communities, ways of life and cultures which you may not have already have learnt about in lesson. It will build upon the time periods that you have studied in lessons but give you an opportunity to explore what else is happening around the world at the same time as well as right here in Leeds. The sessions will be based around the following questions:

- Who called Britain their home during the Roman invasion?
- How did castles evolve after the Normans?
- Who built the Medieval empire of Mali?
- How did the Silk Road connect the East and West?
- What was the impact of the British Empire?
- How did Leeds evolve in the 19th and 20th centuries?

How will this enrich my learning?

This will give you a richer understanding of different time periods, the history of places around the world and the city in which you live. This will help you understand more about how history is made and the different individuals of the past.

What will I develop as a result of this enrichment?

Your work will enable you to understand more about the past and how the societies developed and became interconnected. It will also provide opportunities to work in groups to produce end of topic projects, including building model castles from scratch and vibrant displays showcasing the different places you have learnt about. You will also have other opportunities to listen to experts speak. This will support your development of the school attributes, in particular links concepts and inquisitive.

Who is the enrichment suitable for?

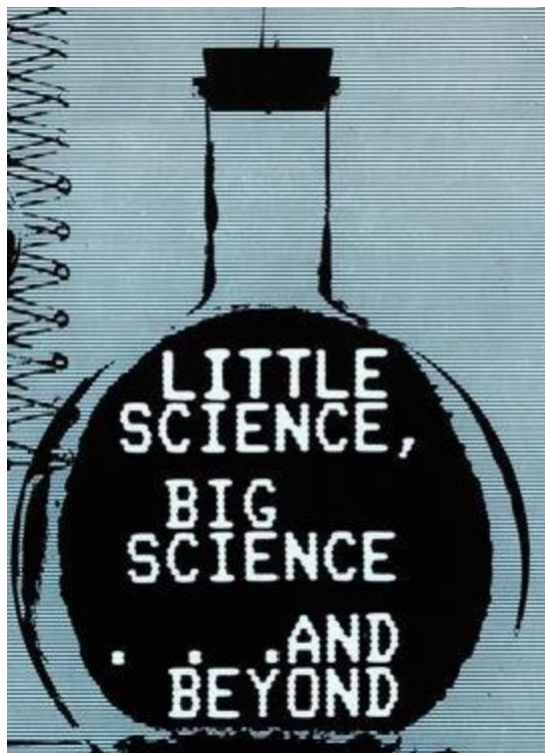
KS3 students.

What is the time commitment?

You can study this in one of your enrichments per week, with the ability to opt for it one term at a time.

Further information:

For further information, please speak to Mr Audsley



What is this enrichment about?

The Magic of science, Little and Large is about exploring the world around us, seeing the unseen, and doing the undone.

You will explore the minute; cells, sea creatures, things which would usually go unseen by the human eye; the little.

Along with discovering and investigating, 'Magic' through science, things which are seen but unexplained; the large.

You will use microscopes to see things too small for the naked eye with the help of microscopes, growing colonies of different organisms, along with viewing large changes and trying to explain these changes, changing the colour of solutions, making gold coins out of pennies, growing large objects out of nowhere, making large objects disappear.

How will this enrich my learning?

You will see how the science we learn in lessons can be applied and used.

It will allow you to have another perspective on certain topics such as light, cells, animals, combustion and many more as well as develop the school attributes of inquisitive and thoughtfulness.

What will I develop as a result of this enrichment?

You will develop your scientific practical skills and your curiosity of science.

You will be able to envision the possibilities of science and understand how science is able to enhance our lives.

You will also develop specific science skills such as:

- Observing
- Measuring
- Communicating
- Inferring
- Predicting

Who is the enrichment suitable for?

KS3 students keen to explore science.

What is the time commitment?

You can study this in one of your enrichments per week, with the ability to opt for it one term at a time.

Further information:

For further information, please speak to Mrs Longhurst