

# Enrichment Options Booklet

## KS3 2025 - 2026

### Term 1



# Contents page

## **My Body**

Multi sports and Dodgeball	Page 4
Fitness suite	Page 5
Exploring Dance Choreography	Page 6

## **My Creativity**

Music Mural from 1960-2023	Page 7
Creativity through Drama	Page 8
Film Critics	Page 9
Instrumental Workshop	Page 10
STEM Building Challenge	Page 11
Lego Challenge	Page 12
Textiles	Page 13
3D Printing	Page 14

## **My Community**

LGBT+ Club	Page 14
Language Club	Page 15
British Sign Language Club	Page 16

## **My Future**

Dino Type	Page 17
Debate club	Page 18
Geo-insights	Page 19

## **My Mind**

Chess Club	Page 20
Flight Club	Page 21
Games club	Page 22
3D Printer	Page 23
History Club	Page 24
Magic of Science, Little and Large	Page 25
Trading Card Games	Page 26



# Enrichment

Our curriculum places great value on extra-curricular activities as a mechanism of enriching the taught curriculum, allowing students to deepen their understanding, see the applications of their studies, promote enjoyment and foster relationships, health, skills and broader interests. The purpose therefore of these enrichment activities is to provide our students opportunities to engage with life in modern Britain and make better informed decisions in adult life.

Temple Moor prides itself on offering a wide and varied suite of extra-curricular activities through the extensive number of clubs, sports teams and performances that our staff run after school, throughout the year, during the new period 6, for two of these nights students will take part in their chosen enrichment activity and on the other three nights students will take part in reading.

Students will opt for two extra-curricular clubs per term from the following categories which they will take part in on a Monday and a Friday:

- **My Body** – activities across a range of sports, including teams which participate in local and regional competitions.
- **My Creativity** – clubs and activities that provide opportunities for students to develop their imagination and inventiveness
- **My Community** – activities linked to supporting and developing student's understanding of their role within the local community
- **My Future** – projects and challenges which broaden students' perspectives beyond Temple Moor.
- **My Mind** – clubs and activities linked to academic subjects.

Enrichment forms an important part of students' daily experience at Temple Moor and provides opportunities for students to develop their initiative, ambition by seeking challenges as well as reflection and collaboration with their peers. This will support students whilst at school as well as preparing them for life once they leave Temple Moor.

Students will make their options during the transition day on Wednesday 9<sup>th</sup> July. Students will select both a first choice and a reserve for Monday and Friday from September. If a student is unfortunate enough not to receive either their first or second choice they will be spoken to directly by a member of staff to select an alternative activity.

Multi sports and Dodgeball  
Subject: Physical Education  
Enrichment activity: My Body

**What is this enrichment about?**

These two enrichment clubs allow you to train as part of a team in a variety of sports.

**How will this enrich my learning?**

This will give you additional time outside of your Core PE lessons to develop your skills as a team. The session will not just be games based but will be designed to improve your overall performance individually and collectively. This will hopefully then make your team more competitive in both external league and cup fixtures.

**What will I develop as a result of this enrichment?**

- Physical attributes
- Technical skills
- Tactics
- Teamwork
- Leadership



**Who is the enrichment suitable for?**

Students who enjoy participating in a variety of sports alongside developing their communication and teamwork skills.

**What is the time commitment?**

You can study this in one of your enrichments per week. The session will last for 30 minutes (2:35-3:05).

**Further information:**

For further information, please speak to Mr Coates



**Fitness Suite**  
**Subject: Physical Education**  
**Enrichment activity: My Body**

**What is this enrichment about?**

This enrichment club allows you to develop your physical, social and emotional wellbeing each week.

**How will this enrich my learning?**

This will give you additional time outside of your Core PE lessons to develop your skills as an individual or partner. The session will be designed to improve your overall performance individually and collectively.

**What will I develop as a result of this enrichment?**

- Physical attributes
- Technical skills
- Tactics
- Teamwork
- Leadership



**Who is the enrichment suitable for?**

Those who are interested in developing their sports skills, or their health and wellbeing.

**What is the time commitment?**

You can study this in one of your enrichments per week. The session will last for 30 mins. You will need your PE kit for each lesson.

**Further information:**

For further information, please speak to Mr Coates





### What is this enrichment about?

Dance enrichment is an opportunity for you to learn teacher led choreography in a variety of dance styles. You will develop your creativity through choreographic group tasks including, developing your own warm ups to lead to the class, creating your own choreography and expanding on pre-existing dance routines. Dance styles include contemporary, hip hop, jazz and musical theatre. Throughout this enrichment, you will also develop your technique through various technical exercises that will allow you to progress further as a dancer.

### How will this enrich my learning?

You will develop a variety of transferable skills that will not only support your progress in dance but also across the whole curriculum. For example, your confidence will improve through group work and performances to support you with the ability to share creative work with peers. You will have the opportunity to explore creatively and develop different ways to express yourself, which will allow you to deal with challenging situations.

### What will I develop as a result of this enrichment?

- Improve dance technique
- General physical fitness
- Performance skills
- Creativity
- Self evaluation
- Co-operative
- Good communicator

### Who is the enrichment suitable for?

All KS3 students

### What is the time commitment?

You can study this in one of your enrichments per week, with the ability to opt for it one term at a time.

### Further information:

For further information, please speak to Miss Riley.



Mural from 1960 – 2023  
Drawing Subject: Art  
Enrichment category: My Creativity



- You will learn how to select appropriate images to create a mural.

**What is this enrichment about?**

This group enrichment activity will enable you to create a massive mural that contains references to different music genres from 1960 to 2023. You will learn techniques such as planning a layout, drawing and painting.

**How will this enrich my learning?**

This enrichment will develop your understanding of the role that art and graphics plays regarding the history of music, the promotion of different music genres and music artist profiles.

**What will I develop as a result of this enrichment?**

- You will develop an understanding of the music art and graphics used through time.
- You will develop your ability to observe and record visually through drawing.

**Who is the enrichment suitable for?**

This course is suited to students who want to develop their observational drawing skills, creativity and problem-solving skills.

**What is the time commitment?**

You will study this course for the duration of one term across Period 6 enrichment slots.

**Further information:**

For further information, please speak to Mr Cashon.





### What is this enrichment about?

Drama enrichment gives you the opportunity to explore your creativity using a stimulus as the basis for devising performances. You will also develop basic drama skills such as vocal and physical skill which will allow you to create higher quality performances. Alongside this we will explore techniques such as mime and physical theatre to add extra elements to your performances, which will further support your curriculum experience.

### How will this enrich my learning?

You will develop a variety of transferable skills that will not only support your progress in drama but also across the whole curriculum. For example, your confidence will improve through group work and performances to support you with the ability to share creative work with peers. You will have the opportunity to explore creatively and develop different ways to express yourself, which will allow you to deal with challenging situations.

### What will I develop as a result of this enrichment?

- Improve drama technique
- Performance skills
- Creativity
- Confidence
- Good communicator
- Reflective
- Motivated

### Who is the enrichment suitable for?

KS3 students

### What is the time commitment?

You can study this in one of your enrichments per week, with the ability to opt for it one term at a time.

### Further information:

For further information, please speak to Miss Hewson.







### What is this enrichment about?

Film Critics is your opportunity to explore how films build anticipation, fear and excitement in their audiences. You'll watch key moments from classic films such as 'Jaws' and 'Jurassic Park' and work out how the director has been so successful. You'll consider atmosphere, camera perspective, angles and how it has been cut to work together. If you chose this activity, you will watch a wide variety of film from different genres, times and cultures, including short film and animation. You'll work together to critique, review and express your opinions.

### How will this enrich my learning?

This will enable you to understand how ideas are built and combined to create bigger concepts. You'll learn more about the choices a director makes and how they structure their creations for impact. You'll be evaluating but also understand key moments in stories. You'll be building your understanding of genre and getting to grips with how texts work.

### What will I develop as a result of this enrichment?

You'll have lots of opportunities to share ideas and this will help build your confidence. You'll have the chance to work with new people and deepen your own thoughts through collaboration. You'll have fun with the Special Effects from the 1970s and as a consequence of being an insightful reader of film, be more aware of the writer's choices when you're reading different types of texts.

The learning attributes you will develop include:

- Evaluation
- Communication
- Co-operative
- Inquisitive

### Who is the enrichment suitable for?

This option is available at KS3.

### What is the time commitment?

You can study this in one of your enrichments per week, with the ability to opt for it one term at a time.

### Further information:

For further information, please speak to Mr Storey or Miss Gibson.



### What is this enrichment about?

Music enrichment will give you the opportunity to explore a variety of instruments and music genres. You will learn basic skills on different instruments such as keyboard, ukulele, and drums, as well as developing ensemble skills when playing music with your peers. You will explore, through listening to and playing, a variety of genres of music to broaden your musical understanding. You will also take a part in different activities that will improve your performance and composition skills.

### How will this enrich my learning?

You will develop a variety of transferable skills that will not only support your progress in music but also across the whole curriculum. For example, your confidence will improve through group work and performances to support you with the ability to share creative work with peers. You will have the opportunity to explore creatively and develop different ways to express yourself, which will allow you to deal with challenging situations.

### What will I develop as a result of this enrichment?

- Improve instrumental technique
- Performance skills
- Creativity
- Ensemble skills
- Broader understanding of different genres of music.
- Good communicator
- Co-operative

### Who is the enrichment suitable for?

KS3 students

### What is the time commitment?

You can study this in one of your enrichments per week, with the ability to opt for it one term at a time.

### Further information:

For further information, please speak to Mrs Johnson.



### What is this enrichment about?

STEM (Science, Technology, Engineering and Mathematics) building challenge is about developing skills which are used in STEM careers to allow you to improve your problem solving and team work skills. If you chose this activity you will be given a task and a tray of equipment which can be used to complete your task. You will then have a research session to develop ideas, a trial session to refine your ideas and then a sharing session to identify the winning team and reflect on your creation.

Examples of activities include:

- How to suspend a 1kg mass 10 cm above the ground
- To make a floating vessel which can hold the largest mass
- To construct a vehicle which can travel the furthest
- To construct a vehicle which can travel the fastest.

### How will this enrich my learning?

This will enable you to apply the school qualities in demonstrating initiative in creating solutions for

each task. You will then demonstrate resilience and reflection when reviewing and completing the tasks under a set time period. The tasks will also build on your scientific knowledge gained in lessons by applying this to different situations.

### What will I develop as a result of this enrichment?

You will develop your teamwork and communication skills as tasks will be completed in groups as well as the school attributes Thoughtfulness and Inquisitive.

### Who is the enrichment suitable for?

All KS3 students.

### What is the time commitment?

You can study this in one of your enrichments per week, with the ability to opt for it one term at a time.

### Further information:

For further information, please speak to Mrs Jellett.



### What is this enrichment about?

You will embark on the LEGO® Learning System. This is a series of solutions that work seamlessly together to deliver engaging, hands-on STEAM (Science, Technology, Engineering, Arts and Mathematics) learning experiences for students of all ages. It combines standards-aligned curriculum units, stackable LEGO bricks, a simple coding progression, intelligent hardware, and professional development, creating limitless possibilities for playful STEAM learning.

Bricks: Build, tinker and experiment with a system of LEGO® elements.

Programming: Learn and apply coding principles in a STEAM context.

Intelligent Hardware: Expand learning opportunities with a system of LEGO® hardware elements that are easy to build.

### How will this enrich my learning?

You will become confident, life-long learner through unlimited possibilities for hands-on, playful STEAM learning.

### What will I develop as a result of this enrichment?

STEAM programs are a highly motivating and engaging way for pupils to develop and demonstrate their science and technology skills. These programs help pupils learn the cooperation, collaboration, and teamwork skills they'll need to excel in a changing workforce as well as allow them to be inquisitive.

### Who is the enrichment suitable for?

KS3 students.

### What is the time commitment?

You can study this in one of your enrichments per week, with the ability to opt for it one term at a time.

### Further information:

For further information, please speak to Mr Duba.



### **What is this enrichment about?**

This enrichment activity is about you researching designers and new artists who make links to cultures through pattern and colour to inspire you personally and your learning.

You will develop new skills such as photoshop and intertwine this with embroidery skills, to create your own patterns using needlework, incorporating clash colours to make your work unique!

### **How will this enrich my learning?**

You will seek challenge in researching a designer/new artist and adapt their style to influence your designs. You will also develop your critical thinking when it is time for you to create your final design in embroidery, as well as problem solving in overcoming any issues you have in trying to make your design a reality.

### **What will I develop as a result of this enrichment?**

You will learn how to use programmes such as photoshop in designing your project. You will need

to work to strict deadlines, from the initial design stage through to the final product, ensuring you fulfil the brief you were given.

The learning attributes you would develop through this club include Thoughtful and Self evaluative.

### **Who is the enrichment suitable for?**

KS3 students.

### **What is the time commitment?**

You can study this in one of your enrichments per week, with the ability to opt for it one term at a time.

### **Further information:**

For further information, please speak to Mrs Harris or Miss Carter.



### **What is this enrichment about?**

Pride groups provide a safe place for LGBT+ and ally young people to meet, socialise and make a positive change in the school.

Our group programme will involve looking at engaging LGBT+ resources to find out what is happening in the wider world today and the topics you care about- from a being a visible ally, LGBT+ cinema, being an LGBT+ person of faith and coming out.

We will also be looking to make the school a more LGBT+ friendly environment. This will involve reviewing the displays in classrooms, LGBT figures in the curriculum and helping to plan resources for events such as pride month.

### **How will this enrich my learning?**

This will enable you to develop the school's values of endeavour and ambition in developing the school to reflect our diverse community.

### **What will I develop as a result of this enrichment?**

Communication skills will be developed through listening to ideas and planning events in school. You will also develop your knowledge and awareness of current affairs and issues that may particularly affect the LGBT+ community. You will also need to get creative in developing eye catching resources that can be used around school.

### **Who is the enrichment suitable for?**

KS3 students.

### **What is the time commitment?**

You can study this in one of your enrichments per week, with the ability to opt for it one term at a time.

### **Further information:**

For further information, please speak to Mr Turner.





### What will I develop as a result of this enrichment?

- Communication and social skills
- Awareness of phonics and sounds in foreign languages
- Translation skills
- Respect of other cultures and customs

The school learning attributes you would develop through this club include Inquisitive and Communication.

### What is this enrichment about?

The Language club is designed to enable you to learn new languages. By the end of the course, you will be able to introduce yourself giving your name, age and birthday, greet people, express how you feel, and also talk about food and drinks in other languages.

### How will this enrich my learning?

This will enable you to enrich your cultural knowledge and your communication and social skills. You will develop your resilience when having to use a new language and your self-confidence when you realise you can speak a new language and communicate with native speakers. By learning a new language, you are acquiring transferable skills which will become useful in many other situations in life.

### Who is the enrichment suitable for?

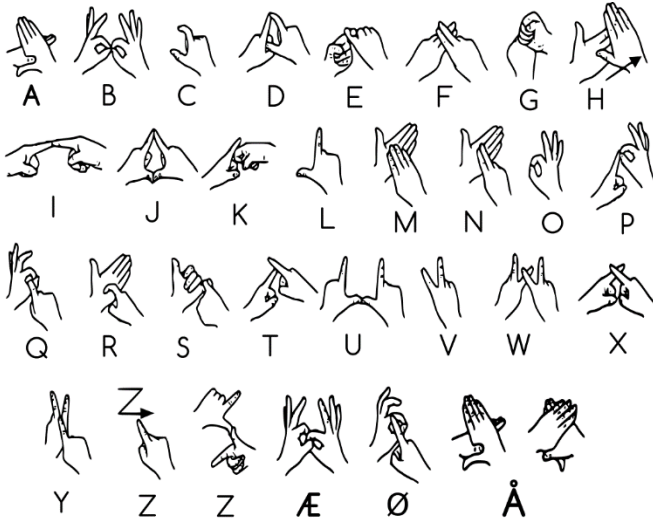
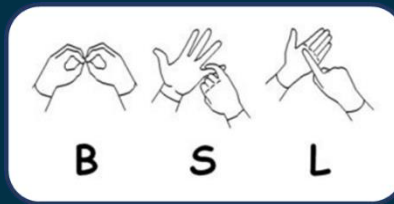
KS3 students.

### What is the time commitment?

You can study this in one of your enrichments per week. You will have the ability to opt for it one term at a time.

### Further information:

For further information, please speak to Mrs Greenfield.



**What is this enrichment about?**

Ever wanted to learn another language?  
 What about a silent language?

Did you know that 1 in 6 of the UK adult population is affected by hearing loss?

900,000 people in the UK are profoundly deaf.

Perhaps you know someone who suffers from hearing loss, perhaps a family member? Wouldn't it be brilliant if you could communicate with them?

Come and join us and learn how to sign!

We will be starting with the basics and go from there. You never know, you may be a natural and this may well become your second language!

**How will this enrich my learning?**

Learning any new language supports your knowledge growth and ultimately makes you more employable in the future. You will be able to communicate with loved ones who have lost

their hearing or people you work with in the future.

Communication is how we all get along and would it not be a better world if everyone has the ability to be *heard*.

**What will I develop as a result of this enrichment?**

You will develop your understanding of the British Sign Language alphabet and key words so that you can have a full silent conversation.

The school learning attributes you would develop through this club include Good communicator and Motivation.

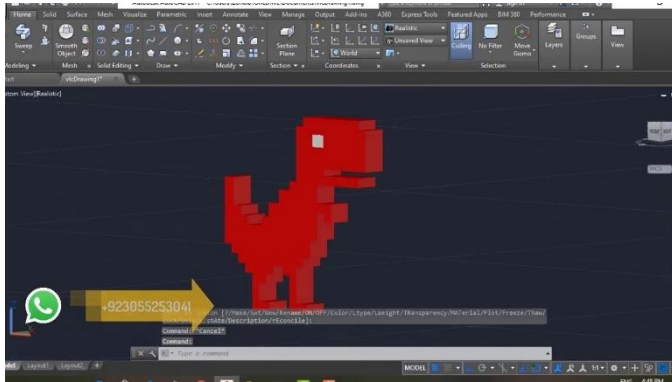
**Who is the enrichment suitable for?**

All KS3 students.

**What is the time commitment?**

You can study this in one of your enrichments per week, with the ability to opt for it one term at a time.





### What is this enrichment about?

This enrichment activity will involve you developing your ability to work towards a design brief and use the iterative design process to create mini prototypes for a promotional window display. You will be tasked with creating Dinosaur models to be displayed in a window for a promotional display in a toy shop. Over this enrichment you will collect research, model, develop and evaluate until you reach your final prototype which will then be cut using CAD / CAM.

### How will this enrich my learning?

This will enable you to apply the school's qualities in demonstrating initiative when designing products to be displayed. You will then develop teamwork when it is time to turn your design into a real-life model. You will also demonstrate resilience as learning a new skill never works first time.

### What will I develop as a result of this enrichment?

You will develop practical skills through this and develop the school attributes including

thoughtfulness and self-evaluative. You will understand different papers and boards, nets to then further develop structures. You will then draw up your prototypes on CAD using maths and science to visually communicate.

The school attributes you will develop through this enrichment activity include:

- Inquisitive – what foods go well together, and which don't?
- Thoughtfulness - What foods from around the world do you enjoy?
- Links Concepts – Using the main food groups plan and prepare healthy, balanced meals.

### Who is the enrichment suitable for?

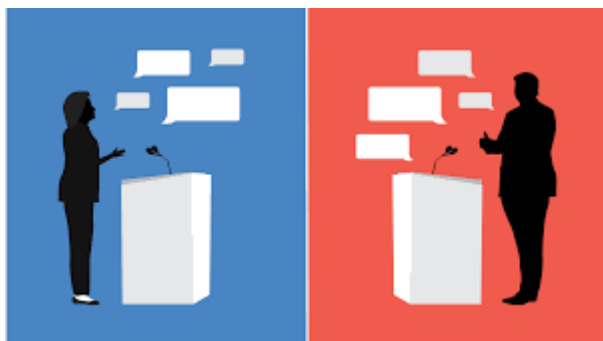
All KS3 students.

### What is the time commitment?

You can study this in one of your enrichments per week, with the ability to opt for it one term at a time. Be aware there will be a small cost for ingredients.

### Further information:

For further information, please speak to Miss Carter.



### What is this enrichment about?

Debates provide you with a platform to share your views and to try and convince other people to agree and share your point of view. They are often used prior to elections where potential candidates try to persuade people to vote for them. As part of this enrichment activity you will be given a question to debate such as:

***Everyone should become a vegetarian to help stop climate change***

***Cars should be banned from cities***

***We should only eat food that is grown in Britain***

You will then work in teams to research and create an argument before going head to head with a group of students or staff that have an opposing view – its up to you to be convincing and win over as many people as you can!

### How will this enrich my learning?

This will support your learning through communication and group work. You will need to be reflective and demonstrate initiative on your feet as

you listen to the viewpoints that differ from yours so that you are able to articulate a suitable counter argument in a timely manner. You will also develop the school learning attributes Good communicator and Resilience.

### What will I develop as a result of this enrichment?

By taking part in the Debate club you will become more persuasive speakers, critical listeners, analytical thinkers and engaged citizens. This will support you in school in extended writing tasks as well as outside of school in being more articulate as well as being aware of events that affect us all.

### Who is the enrichment suitable for?

KS3 students.

### What is the time commitment?

You can study this in one of your enrichments per week, with the ability to opt for it one term at a time.

### Further information:

For further information, please speak to Miss Mayfield.



### What is this enrichment about?

This will involve you developing your fieldwork and observational skills to study the geography of Temple Moor and its grounds and the key human and physical features of its surrounding environment through investigating the local area such as traffic counts, biodiversity and the sustainability of the school.

### How will this enrich my learning?

This will give you an understanding of how fieldwork is undertaken in Geography. We will come up with a hypothesis, undertake the fieldwork as a group, work out the best way to present our data, and then analyse it to discover our findings. This could include things like completing traffic surveys and biodiversity studies.

### What will I develop as a result of this enrichment?

- Teamwork
- Analytical skills
- Data presentation techniques
- An understanding of how to use different fieldwork equipment.

### Who is the enrichment suitable for?

KS3 students.

### What is the time commitment?

You can study this in one of your enrichments per week. The session will last for 30 minutes (2:35-3:05).

### Further information:

For further information, please speak to Mrs Mayfield or Miss Webb







### **What is this enrichment about?**

England has a well established chess club scene with more than 600 over the board clubs across all parts of the nation, many of them with junior and online clubs in addition to face-to-face club nights and competitions. We want to add to this!

We're not just looking to train up the next Nino Batsiashvili or Felix Blohberger, we're also wanting people to want to learn the game; people who already enjoy the game and just want to play; and people who want to improve their knowledge and skills.

### **How will this enrich my learning?**

Learning any new game helps improve your mind, chess in particular helps your thinking and problem-solving skills and supports building your self-confidence as well as developing the school attributes Self evaluative and Thoughtfulness.

Every day and in every lesson, you face problem solving challenges, wouldn't life be that little bit better if you had the improved skills to tackle these problems a little faster and a little better?

### **What will I develop as a result of this enrichment?**

You will develop your understanding of the game and how to play not just the game, but also your opponent.

### **Who is the enrichment suitable for?**

All KS3 students.

### **What is the time commitment?**

You can study this in one of your enrichments per week, with the ability to opt for it one term at a time.

### **Further information:**

For further information, please speak to anyone in the Maths faculty.





**Flight Club**  
**Subject: Mathematics**  
**Enrichment category: My Mind**



**What will I develop as a result of this enrichment?**

*“Playing darts can have profound effects on the brain, providing a dynamic mental workout that sharpens cognitive skills, nurtures neuroconnectivity and provides a holistic approach to brain health,”* says **Dr S Alder, Consultant Neurologist**

**What is this enrichment about?**

Are you the next Luke Littler?

Starting with a score of 501 you have to try and get down to zero the quickest, by getting high numbers on the board – but you must end precisely on zero with a double, so there’s a lot of maths and mental gymnastics involved.

**How will this enrich my learning?**

Playing darts will develop your precision, focus and hand-eye coordination as well as the enhancement of mathematical skills by adding, multiplying and subtracting as you play games such as 501. However, beyond simple arithmetic, darts encourages strategic thinking as you must plan several steps ahead,

considering the best combinations to close the game efficiently. This strategic aspect exercises higher-order thinking skills such as planning, foresight, and problem-solving.

**Who is the enrichment suitable for?**

KS3 students.

**What is the time commitment?**

You can study this in one of your enrichments per week, with the ability to opt for it one term at a time.

**Further information:**

For further information, please speak to Mr Godrich.





### **What is this enrichment about?**

You will learn and play the games Ligretto, SET and Dobble.

Ligretto is a game of speed and agility. Get rid of the cards in your Ligretto Stack before your opponents by quickly placing cards of the same colour in numerical order on the piles in the centre of the table!

SET is a board game where any table becomes the board. It is a highly addictive, original game of visual perception. The goal is to be the first to see a SET from the 12 cards laid face up on the table.

Dobble is a speedy observation game where players race to match the identical symbol between cards. Reliant on a sharp eye and quick reflexes, Dobble creates excitement for while keeping every player involved in the action.

### **How will this enrich my learning?**

Learning new skills has been shown to make more connections in the parts of your brain that are involved in muscle control and sensory perception, in a similar way to how your muscles get stronger from exercising regularly.

### **What will I develop as a result of this enrichment?**

You will develop your observation, decision making, cooperation, planning and pattern spotting. You will learn to become a good communicator improve your patience whilst having lots of fun! Card games are good for your brain because they improve your coordination, memory and sequencing.

### **Who is the enrichment suitable for?**

KS3 students.

### **What is the time commitment?**

You can study this in one of your enrichments per week, with the ability to opt for it one term at a time.

### **Further information:**

For further information, please speak to Mrs Parkes.



### **What is this enrichment about?**

This enrichment activity will involve you developing your CAD/CAM (Computer Aided Design/Computer Aided Manufacture) skills as you design products to be 3D Printed. You will need to consider the materials you would use as well as what makes a product feasible to print. Once you have designed your product you will make a scale model of it. It will give you skills that are used in the design industry and will support you Design & Technology lessons. You will also have the opportunity to use CAD/CAM to simulate electronic systems and create your own circuits.

### **How will this enrich my learning?**

This will enable you to apply the school's qualities in demonstrating initiative when designing products to be 3D printed. You will then develop teamwork when it is time to turn your design into a real-life

model. You will also demonstrate resilience as learning a new skill never works first time.

### **What will I develop as a result of this enrichment?**

You will develop IT skills in drawing your design, as well as working to scale. You will develop your knowledge on materials used in the building trade as well as how to make homes damp proof and energy efficient. Alongside this, you will develop skills in cutting, sanding and painting wood as you make the model of your design.

Through this activity you will develop the school attributes including thoughtfulness and self evaluative.

### **Who is the enrichment suitable for?**

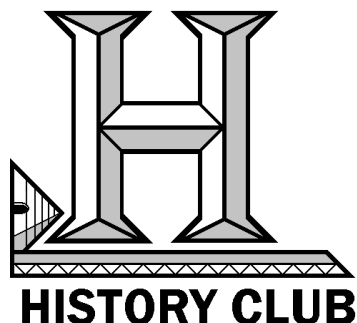
KS3 students.

### **What is the time commitment?**

You can study this in one of your enrichments per week, with the ability to opt for it one term at a time.

### **Further information:**

For further information, please speak to Mr Longfellow.



### What is this enrichment about?

History Club will allow you to explore different communities, ways of life and cultures which you may not have already have learnt about in lesson. It will build upon the time periods that you have studied in lessons but give you an opportunity to explore what else is happening around the world at the same time as well as right here in Leeds. The sessions will be based around the following questions:

- Who called Britain their home during the Roman invasion?
- How did castles evolve after the Normans?
- Who built the Medieval empire of Mali?
- How did the Silk Road connect the East and West?
- What was the impact of the British Empire?
- How did Leeds evolve in the 19<sup>th</sup> and 20<sup>th</sup> centuries?

### How will this enrich my learning?

This will give you a richer understanding of different time periods, the history of places around the world and the city in which you live. This will help you understand more about how history is made and the different individuals of the past.

### What will I develop as a result of this enrichment?

Your work will enable you to understand more about the past and how the societies developed and became interconnected. It will also provide opportunities to work in groups to produce end of topic projects, including building model castles from scratch and vibrant displays showcasing the different places you have learnt about. You will also have other opportunities to listen to experts speak. This will support your development of the school attributes, in particularly links concepts and inquisitive.

### Who is the enrichment suitable for?

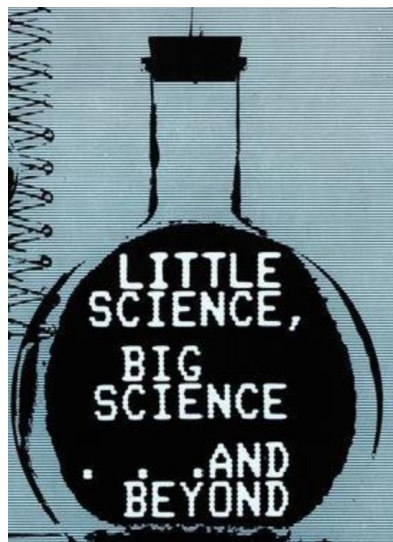
KS3 students.

### What is the time commitment?

You can study this in one of your enrichments per week, with the ability to opt for it one term at a time.

### Further information:

For further information, please speak to Mr Audsley



#### **What is this enrichment about?**

The Magic of science, Little and Large is about exploring the world around us, seeing the unseen, and doing the undone.

You will explore the minute; cells, sea creatures, things which would usually go unseen by the human eye; the little.

Along with discovering and investigating, 'Magic' through science, things which are seen but unexplained; the large.

You will use microscopes to see things too small for the naked eye with the help of microscopes, growing colonies of different organisms, along with viewing large changes and trying to explain these changes, changing the colour of solutions, making gold coins out of pennies, growing large objects out of nowhere, making large objects disappear.

#### **How will this enrich my learning?**

You will see how the science we learn in lessons can be applied and used.

It will allow you to have another perspective on certain topics such as light, cells, animals, combustion and many more as well as develop the school attributes of inquisitive and thoughtfulness.

#### **What will I develop as a result of this enrichment?**

You will develop your scientific practical skills and your curiosity of science.

You will be able to envision the possibilities of science and understand how science is able to enhance our lives.

You will also develop specific science skills such as:

- Observing
- Measuring
- Communicating
- Inferring
- Predicting

#### **Who is the enrichment suitable for?**

KS3 students keen to explore science.

#### **What is the time commitment?**

You can study this in one of your enrichments per week, with the ability to opt for it one term at a time.

#### **Further information:**

For further information, please speak to Mrs Longhurst





### What is this enrichment about?

The two best-selling Trading Card Game (TCG) franchises in the World are Magic! The Gathering and Pokémon TCG. Magic! was made in the 1980's and is played by millions of players around the World with a range of different formats, including Commander and standard format. Pokémon TCG has been around since the 1990's and is played worldwide.

We want you to be one of those million players! This is an opportunity to learn these games in a social setting to enjoy the games casually or competitively.

### How will this enrich my learning?

Thinking on your feet and having to adapt to changes are part of the learning process, and both TCG's give you this opportunity to develop problem solving skills and finding solutions to barriers. It helps you to self-evaluate your situation and

consider next steps to be successful. It also develops your social skills of facing off against other players and develop positive character and respect. Every day and in every lesson, you face problem solving challenges, wouldn't life be that little bit better if you had the improved skills to tackle these problems a little faster and a little better?

### What will I develop as a result of this enrichment?

You will develop your understanding of both Magic! and Pokémon TCG games, and how to play not just the game, but also your opponent. You can solve problems to win the game and be the Temple Moor Champion!

### Who is the enrichment suitable for?

All KS3 students.

### What is the time commitment?

You can study this in one of your enrichments per week, with the ability to opt for it one term at a time.

### Further information:

For further information, please speak to Mr Sutton.