



Dear Parents and Carers,

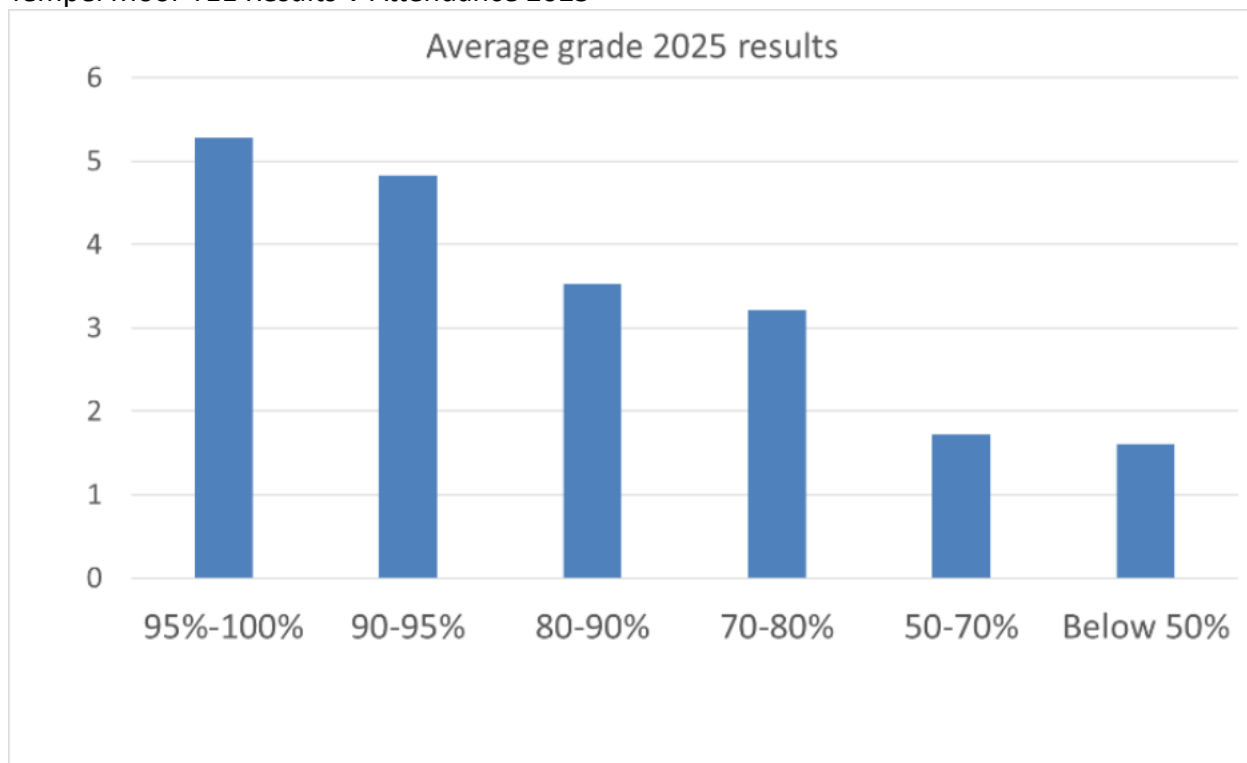
We hope enjoyed a relaxing summer break. As we start the new academic year, we want to highlight the importance of high attendance at Temple Moor. Regular attendance allows students to benefit from the expert guidance of our dedicated staff and maximise their learning potential. We understand balancing school, illness and unforeseen circumstances can be challenging. This is why we'd like to work together to ensure your child thrives.

### Together, Let's Aim High:

- Regular Attendance: Studies show a strong link between attendance and academic achievement, including GCSE and A Level outcomes.
- Maximising Learning: Missing just 10% of school (equivalent to 4 weeks) equates to over 130 hours of learning – almost the same as a single GCSE subject!

Our own research highlights the impact high attendance can have on outstanding outcomes, demonstrated in the visual at the end of this letter. Students who attended regularly benefit from the input of our excellent staff and this reflected in their results year on year.

### Temple Moor Y11 Results V Attendance 2025



**Temple Moor High School & Sixth Form** Field End Grove, Selby Road, Leeds, West Yorkshire LS15 OPT

☎ 0113 390 0770 ✉ info@tmhs.rklt.co.uk 📘 TempleMoorHigh 📧 @TempleMoorHigh

[www.tmhs.co.uk](http://www.tmhs.co.uk)

Principal: Mr M West



**Learning Trust Alliance Teacher Training Teaching School Hub**

Red Kite Learning Trust is a charitable company limited by guarantee registered in England and Wales.

Company number: 7523507. Registered office: Red Kite office, Pannal Ash Road, Harrogate, North Yorkshire HG2 9PH.

Our Privacy Notices can be found via [www.rklt.co.uk/privacy-notice](http://www.rklt.co.uk/privacy-notice).



### How We Can Team Up:

- Open Communication: If your child's attendance drops our Attendance and Pastoral team will reach out to discuss potential support strategies.
- Clear communication with the school if your child cannot attend giving specific reasons as to why.
- Managing Illness: For minor ailments, we encourage a "give it a go" approach, similar to workplace expectations. This builds resilience and reinforces the importance of routine.
- <https://www.nhs.uk/live-well/is-my-child-too-ill-for-school/>
- Sibling Absence: If one child is unwell, please send the others to school as usual.
- Appointments: Whenever possible, schedule appointments outside school hours. If necessary, try to book appointments that allow your child to attend part of the day.
- Term-Time Holidays: We encourage planning holidays during school breaks. This minimises disruption to learning. We do support the new government guidance in relation to the non-authorisation of holidays during term time. **Please see the visual poster accompanying this letter.**
- Attendance Resources: Find detailed attendance expectations on our website

<https://www.tmhs.co.uk/school-life/attendance/>

### Working Together for Success:

We share the governments and your own commitment to providing your child with the best possible future. Our Attendance team is here to support you. If you face challenges with attendance, please don't hesitate to reach out on 0113 390 0770 and press 1 or email [TMHSAttendance@tmhs.rklt.co.uk](mailto:TMHSAttendance@tmhs.rklt.co.uk) we want to work with you to ensure your child benefits from the excellent education Temple Moor can offer them.

Kind Regards

Mrs H Britton  
Associate Deputy Principal Pastoral

**Temple Moor High School & Sixth Form** Field End Grove, Selby Road, Leeds, West Yorkshire LS15 0PT

☎ 0113 390 0770 ✉ [info@tmhs.rklt.co.uk](mailto:info@tmhs.rklt.co.uk) 📘 TempleMoorHigh 📧 @TempleMoorHigh

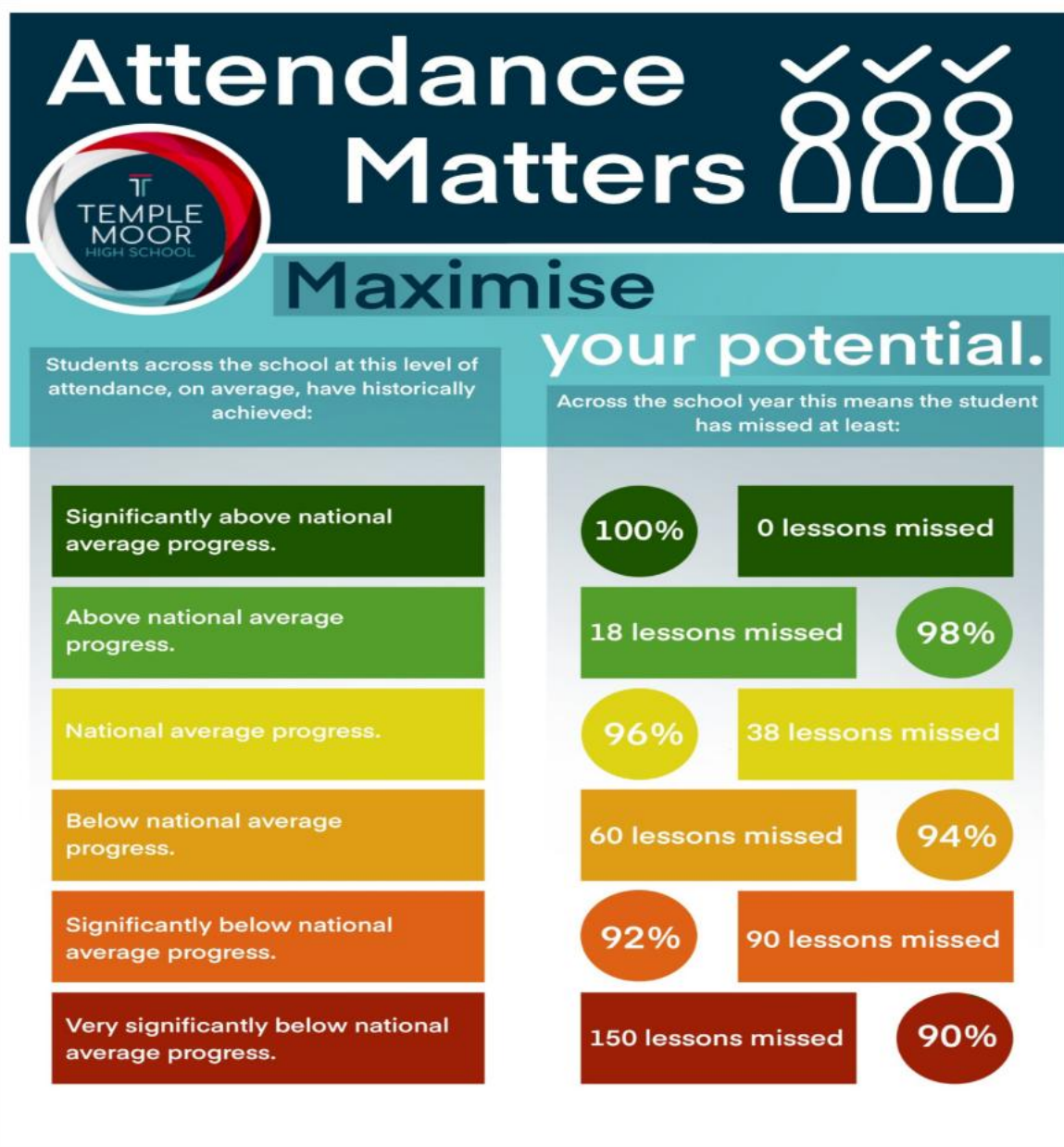
[www.tmhs.co.uk](http://www.tmhs.co.uk)

Principal: Mr M West



**Learning Trust Alliance Teacher Training Teaching School Hub**

Red Kite Learning Trust is a charitable company limited by guarantee registered in England and Wales.  
Company number: 7523507. Registered office: Red Kite office, Pannal Ash Road, Harrogate, North Yorkshire HG2 9PH.  
Our Privacy Notices can be found via [www.rklt.co.uk/privacy-notice](http://www.rklt.co.uk/privacy-notice).



**Temple Moor High School & Sixth Form** Field End Grove, Selby Road, Leeds, West Yorkshire LS15 OPT

☎ 0113 390 0770 ✉ info@tmhs.rklt.co.uk 📘 TempleMoorHigh 📧 @TempleMoorHigh

[www.tmhs.co.uk](http://www.tmhs.co.uk)

Principal: Mr M West



**Learning Trust Alliance Teacher Training Teaching School Hub**

Red Kite Learning Trust is a charitable company limited by guarantee registered in England and Wales.

Company number: 7523507. Registered office: Red Kite office, Pannal Ash Road, Harrogate, North Yorkshire HG2 9PH.

Our Privacy Notices can be found via [www.rklt.co.uk/privacy-notices](http://www.rklt.co.uk/privacy-notices).